

**SWAMI VIVEKANAND GOVERNMENT
COLLEGE GHUMARWIN
DISTRICT BILASPUR (H.P.)**

***A REPORT ON
SATISFACTION SURVEY
ON TEACHING-LEARNING AND CAMPUS FACILITIES
(Based on Students, Alumni and Teacher's feedback)***

SESSION: 2019-20



SECTION-I INTRODUCTION

1. Establishment at a glance

The SVGC Ghumarwin has been established with the state government notification on dated July 1st, 1994 for running arts faculty only. The impressive and well designed building of the college was built by ACC and was handed over in 1999. Science and commerce faculties were started in 1998. The college is affiliated to H.P. University and was given due recognition under UGC section of 12(B) in 2008 and in 2 (F) in 2009. Two new vocational courses BCA and PGDCA were started in 2009 under self financing scheme. In the year 2012 M.A. English was started. In the same year another vocational course BBA was started under self financing scheme. In the year 2014, NAAC team visited the college and the institution was accredited as “B grade” institution. Two more PG courses M.Sc. Physics and Mathematics were introduced in 2017 and M.Com program introduced in session 2019-2020. At present the college is spread over 73.11 bighas of land the entire campus of college is under CCTV surveillance and is connected to Wi-Fi and broadband internet system.

The college has registered a tremendous growth in enrolment. At present about 3000 students coming from far-flung rural areas are studying in various UG and PG courses being run by this college. The college has well-furnished laboratories in the Science faculty and also in the Departments of Geography, Music and Computer Applications. It has a girls' hostel having a capacity to accommodate 91 girl students. It has its own well-furnished gymnasium, Examination hall, conference Hall, playgrounds, boxing ring. The college has a well-stocked library now the library has been shifted to a new building. The construction work of the new commerce block has been started. Tenders for college Auditorium have been floated and very soon its construction work will be started. An amount of Rs. 4,442,2900/- has been sanctioned for this.

The college is dedicated to the cause of learning by imparting education to inculcate a sense of responsibility devotional service among the students. The college provides a blend of academic, cultural, sports and intellectual resources. It also brings to the students a dynamic environment for the overall development of their personalities, aspirations and talents. In nut shell today, the college is known as one among the finest institutions in the state for Sciences, Humanities and Commerce:-

Over the years, the college has shown consistently very good results as compared to H.P.U. pass percentage and every year students of this college get positions in the merit lists notified by H.P.

Vision of the college: To enable students to become economically independent, mentally strong and spiritually eminent human beings and socially responsible and committed citizens.

Mission of the college: Mission of the college: Swami Vivekanand has said that education is 'the manifestation of the perfection already in man' so our endeavour is to 'manifest that perfection' by imparting quality and character building education to enable students to face the challenges of life and meet the needs of society. Our effort is always there to provide an

environment conducive to innovation, creativity and team spirit and also to felicitate effective and fruitful interactions among faculty and students.

SECTION-II

RESEARCH DESIGN

2. Research Design

Research design is the blue print of the whole research work and includes specified framework for collecting and analyzing the collected information in a systematic manner. It acts like a base or guide to the investigator to move with the investigation. A research design is a plan according to which the whole research work is carried out. It provides the empirical and logical basis for drawing the conclusions. In the present study following design and methodology has been followed:-

2.1 Need for the survey

No matters how highly an institution is rated, it is not greater than its students because students are the factors that make the institution come alive. Student satisfaction refers to the attraction, pride, or positive feelings that students develop towards a particular program or institution. Student satisfaction surveys helps to measure the effectiveness of classroom teaching and the student feedback provide a roadmap to determine different alternative methods to make education more effective. Student satisfaction tries to identify and implement the multi-faceted areas of development. Swami Vivekanand Government College is no exception to conduct student satisfaction surveys. The practice of analyzing student feedback on different aspects of the institution is being done annually but more specifically after the recommendations of the NAAC Peer Team Report 2014. After taking into consideration the comments of previous NAAC report the institution has extended the practice of analyzing feedback to alumni and teachers of the college also to make the survey more meaningful.

2.2 Objectives of survey

Objectives of a study are the end points for the attainment of which whole investigation is carried out. In the present survey following objectives have been framed:

- ❖ To study the perception and satisfaction level of students towards campus facilities and teaching learning process of SVGC Ghumarwin.

- ❖ To examine the perception and satisfaction level of alumni towards campus facilities and teaching learning process of SVGC Ghumarwin.
- ❖ To check the perception and satisfaction level of teachers towards different aspects of curriculum taught by teachers of SVGC Ghumarwin.
- ❖ To invite suggestions and recommendations from students, alumni and teachers for the holistic development of institution.

2.3 Scope of survey

Scope of a study acts like boundary walls of an investigation beyond which the investigator can't exercise than the results can't be generalised. The scope of the present survey is confined to a random sample of 584 stakeholders (students, alumni and teachers) belonging to SVGC Ghumarwin Distt. Bilaspur H.P.

2.4 Sample composition and size

The sample for present survey has been framed in the following manner:

Table 2.1: Profile of the overall respondents

Respondents	Frequency	Percentage
Students	434	74.32
Alumni	102	17.46
Teachers	48	8.22
Total	584	100

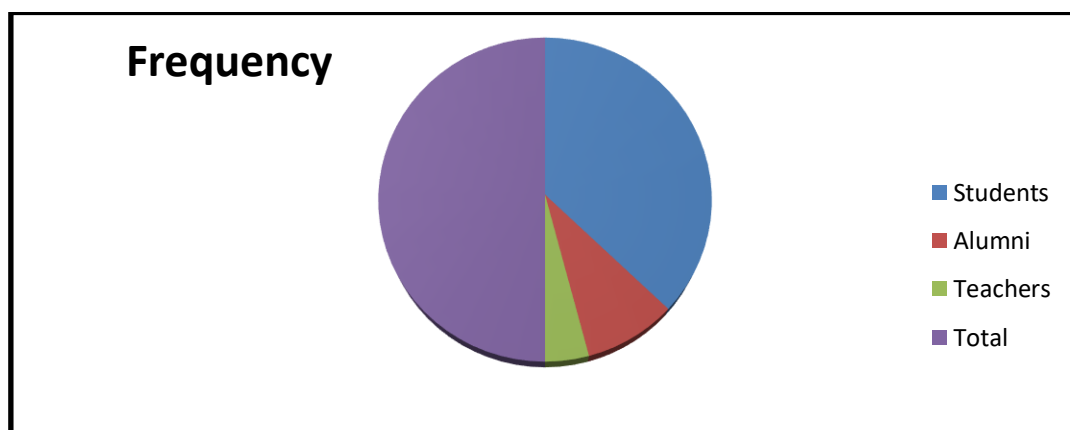


Figure 2.1: Profile of the overall respondents

The table shows that the total sample for present survey is composed of students, alumni and teachers which accounts for 74.32 percent, 17.46 percent and 8.22 percent respectively during 2019-2020.

Table 2.2: Profile of the student respondents

Stream of the students	Frequency	Percentage
Arts	137	31.57
Commerce	110	25.35
Science	78	17.97
Professional (BBA, BCA, PGDCA)	47	10.83
Post graduation (M.Sc, M.A, M.com)	62	14.28
Total	434	100.0

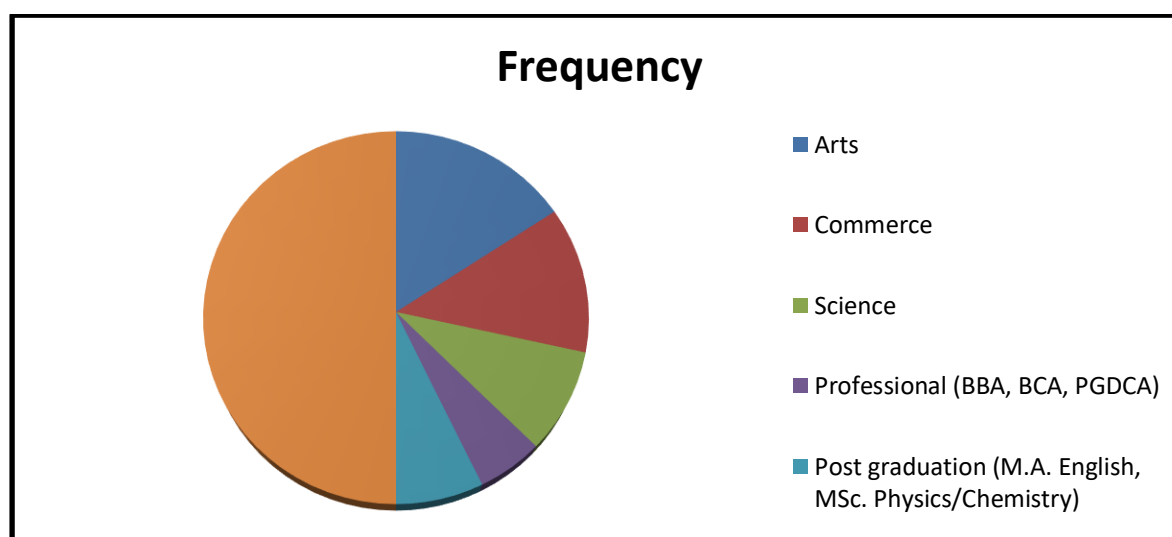


Figure 2.2: Profile of the student respondents

Above table and figure reveals that the student respondents for the present survey have been selected randomly from all streams being run the institution during 2019-2020. As evident from the table maximum respondents have been selected from arts stream followed by sciences, commerce, professional and other courses respectively.

2.5 Collection of data

Required information has been collected from 434 randomly selected students from at least each stream of the college with the help of well structured questionnaire designed on five point rating scale.

2.6 Tools and techniques used for analysis

The collected information has been analyzed with the help of frequency tables, pie-charts, graphs and percentage.

2.7 Tentative Chapterisation

The survey report has been organised into four sections as under:

The first section deals with introductory part of the report on general information about the college. Second part of the report presents the research design and methodology used in the study. The third section illustrates the analysis and interpretation of collected data with the help of suitable statistical and mathematical tools. This section has been further divided into three sections in which the Part-A, Part-B and Part-C deal with the analysis and interpretation of student, alumni and teachers feedback respectively. Finally, the fourth and last section provides an overview of conclusions and suggestions of the present survey.

SECTION-III

ANALYSIS AND INTERPRETATION

PART:A- Analysis of the student feedback on teaching and campus facilities of SVGC Ghumarwin:

The data collected from the students has been analyzed with the help of percentage, bar diagrams and pie charts.

Table 3.1: Perception of the students about Infrastructure Facility

Response	Frequency	Percentage
Below Average	12	2.8
Average	58	13.3
Good	153	35.3
Very Good	149	34.3
Excellent	62	14.3
Total	434	100.0

Source: Students survey 2019-2020.

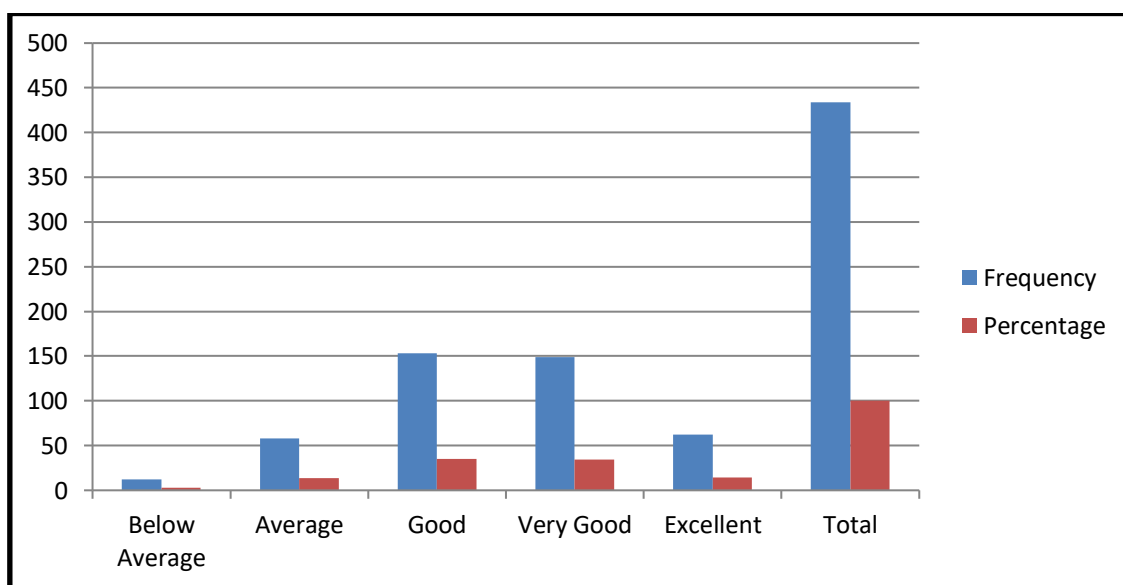


Figure 3.1: Perception of the students about Infrastructure Facility

It is evident from the table that the majority of students studying in college are satisfied with the Infrastructure facility available in the college.

Table 3.2: Perception of the students about Cleanliness of the campus

Response	Frequency	Percentage
Below Average	22	5
Average	60	14
Good	100	23
Very Good	157	36
Excellent	95	22
Total	434	100

Source: Students survey 2019-2020

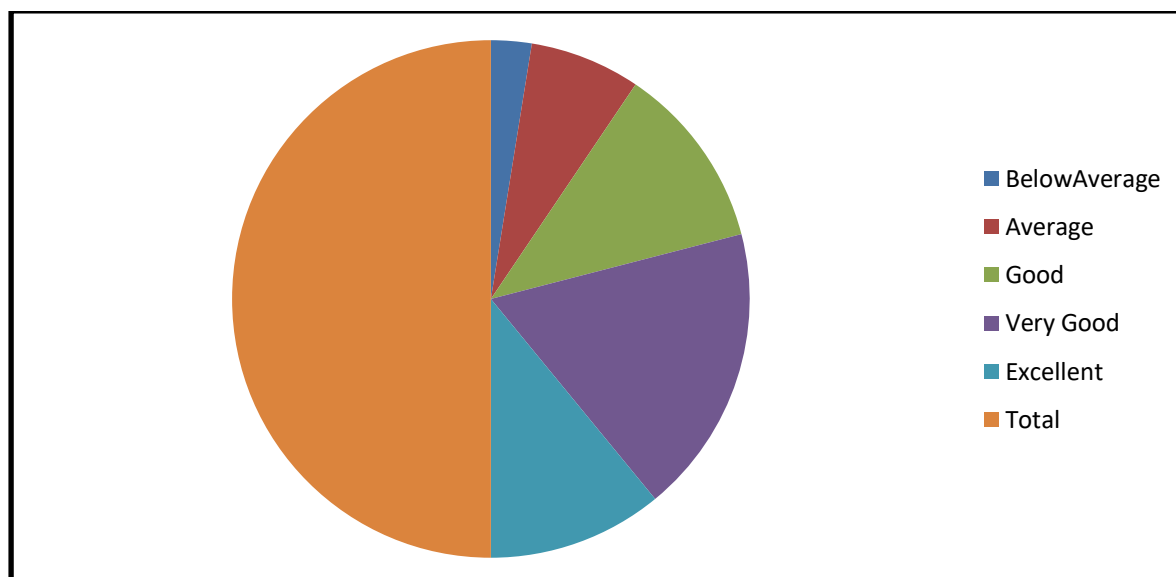


Figure 3.2: Perception of the students about Cleanliness of the campus

. It is evident from the table and figure that the most of respondents of the college shows respectable response toward cleanliness of the campus. To make the Swachh Bharat Abhiyaan successful the sale of plastic packed commodities has been banned inside the campus

Table 3.3: Perception of the students about Security Arrangements

Response	Frequency	Percentage
Below Average	0	0
Average	59	13.7
Good	103	23.7
Very Good	152	35.0
Excellent	120	27.7
Total	434	100.0

Source: Students survey 2019-2020.

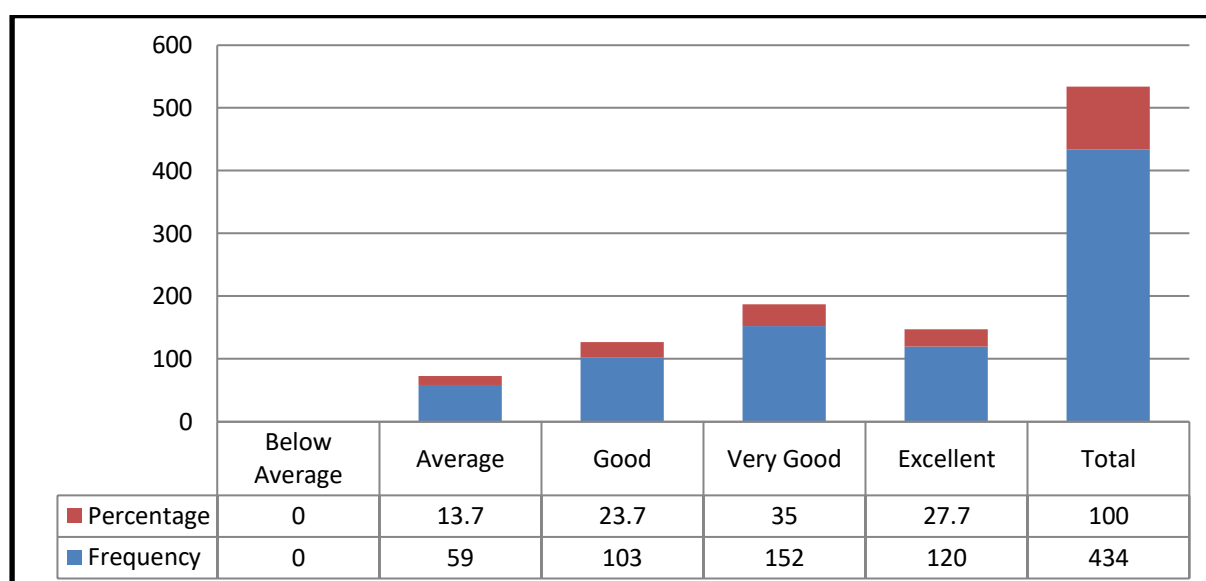


Figure 3.3: Perception of the students about Security Arrangements

It is apparent from the table that the majority of students of SVGC Ghumarwin have highly rated security arrangements in the college.

Table 3.4: Perception of the students about Library facilities

Response	Frequency	Percentage
Below Average	30	7
Average	35	8
Good	90	21
Very Good	180	41
Excellent	99	23
Total	434	100.0

Source: Students survey 2019-2020

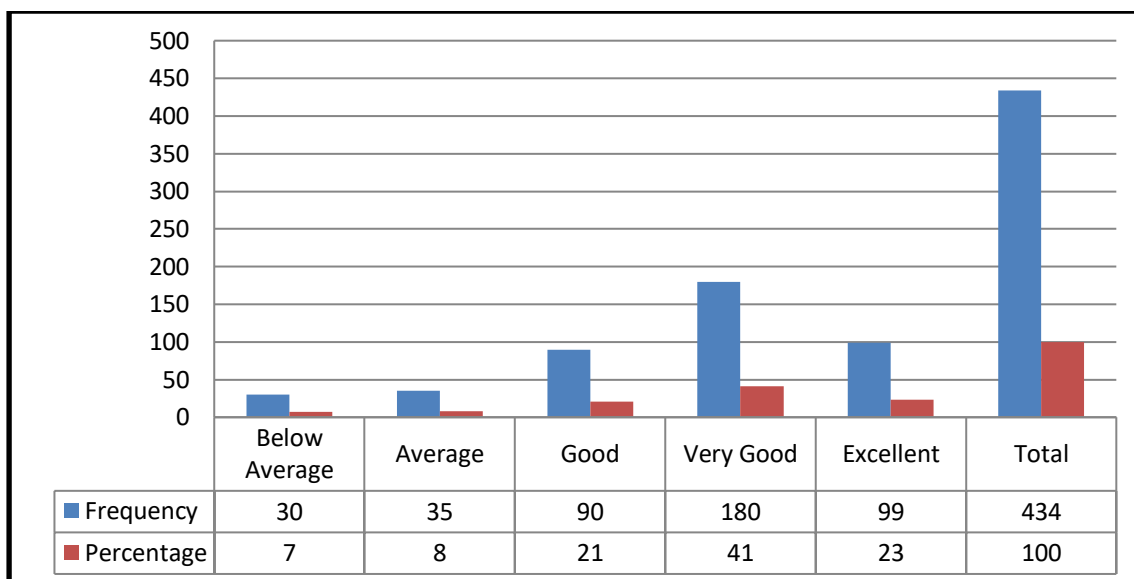


Figure 3.4: Perception of the students about Library facilities

It is apparent from the table that the majority of respondents of SVGC Ghumarwin are satisfied from the facility provided in the library.

Table 3.5: Perception of the students about Internet Facilities

Response	Frequency	Percentage
Below Average	61	14.0
Average	90	20.7
Good	162	37.3
Very Good	104	24.0
Excellent	17	4.0
Total	434	100.0

Source: Students survey 2019-2020

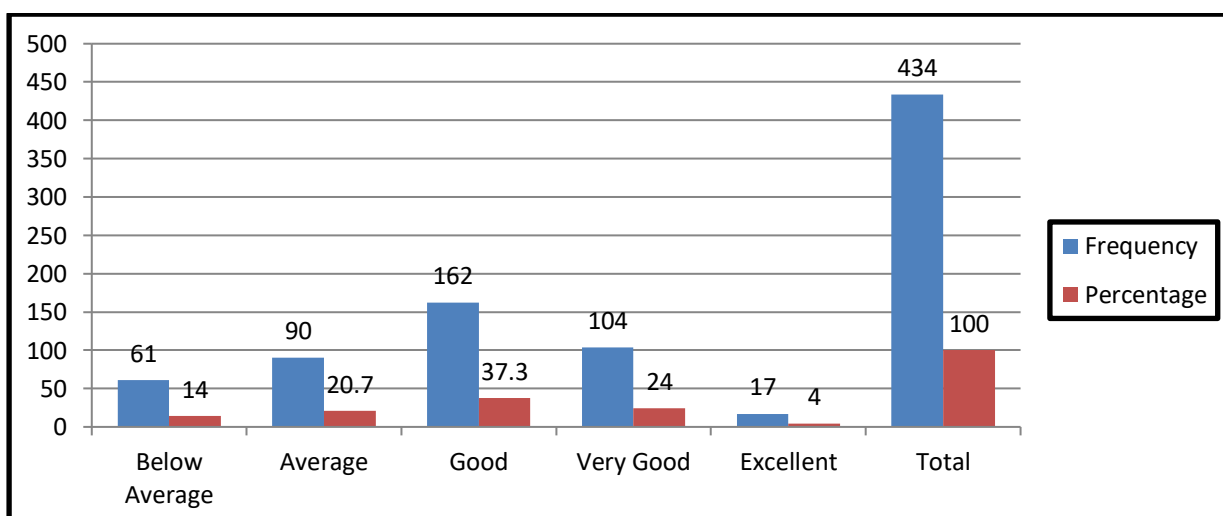


Figure 3.5: Perception of the students about Internet Facilities

It is evident from the table that the majority of our students of SVGC Ghumarwin are gratified from the internet facility provided in the college.

Table 3.6: Perception of the students about Canteen Facilities

Response	Frequency	Percentage
Below Average	15	3
Average	60	14.0
Good	126	30.0
Very Good	150	35.0
Excellent	80	18.0
Total	434	100.0

Source: Students survey 2019-2020

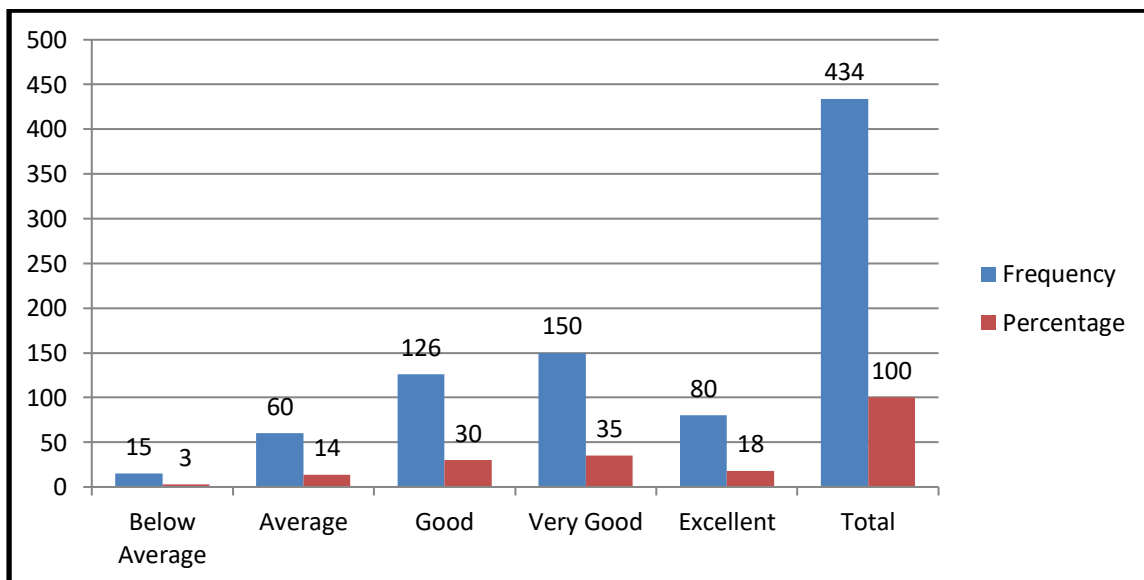


Figure 3.6: Perception of the students about Canteen Facilities

It is apparent from the table that the most of respondents of SVGC Ghumarwin are joyful about the availability of canteen and shows good response toward the canteen facilities available in the college.

Table 3.7: Perception of the students about Transportation Facilities

Response	Frequency	Percentage
Below Average	64	14.7
Average	99	22.7
Good	108	25.0
Very Good	134	31.0
Excellent	29	6.7
Total	434	100.0

Source: Students survey 2019-2020



Figure 3.7: Perception of the students about Transportation Facilities

It is apparent from the table that the most of respondents of SVGC Ghumarwin are satisfied with the transportation facilities available as provided by HRTC and private transporters.

Table 3.8: Perception of the students about Sports Facilities

Response	Frequency	Percentage
Below Average	20	5.0
Average	55	13.0
Good	79	18.0
Very Good	180	41.0
Excellent	100	23.0
Total	434	100.0

Source: Students survey 2019-2020

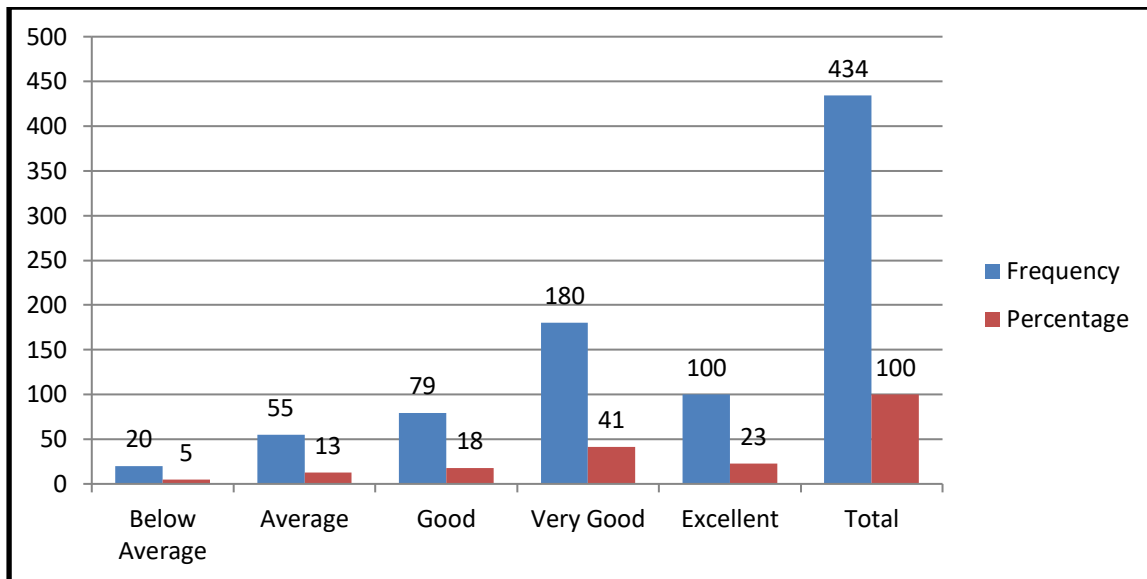


Figure 3.8: Perception of the students about Sports Facilities

It is evident from the table that the majority of our students of SVGC Ghumarwin are satisfied from the sports facility provided in the college which is reflected in sports achievements of the college.

Table 3.9: Perception of the students about Medical Facilities

Response	Frequency	Percentage
Below Average	54	12.3
Average	122	28.0
Good	143	33.0
Very Good	72	16.7
Excellent	43	10.0
Total	434	100.0

Source: Students survey 2019-2020

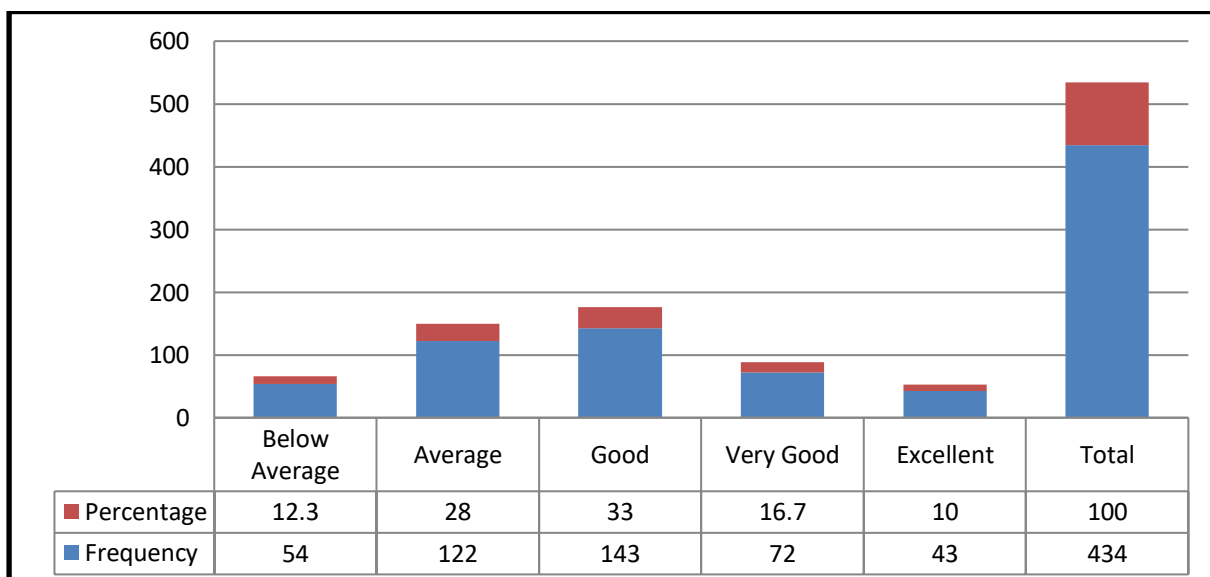


Figure 3.9: Perception of the students about Medical Facilities

Students of the College SVGC Ghumarwin moderately satisfy with Medical Facilities available in the college with the help of medical camps arranged on weekly visit of doctor in the college.

Table 3.10: Perception of the students about Career counselling/Guidance

Response	Frequency	Percentage
Below Average	64	15
Average	50	12.0
Good	90	21.0
Very Good	120	27.0
Excellent	110	25.0
Total	434	100.0

Source: Students survey 2019-2020

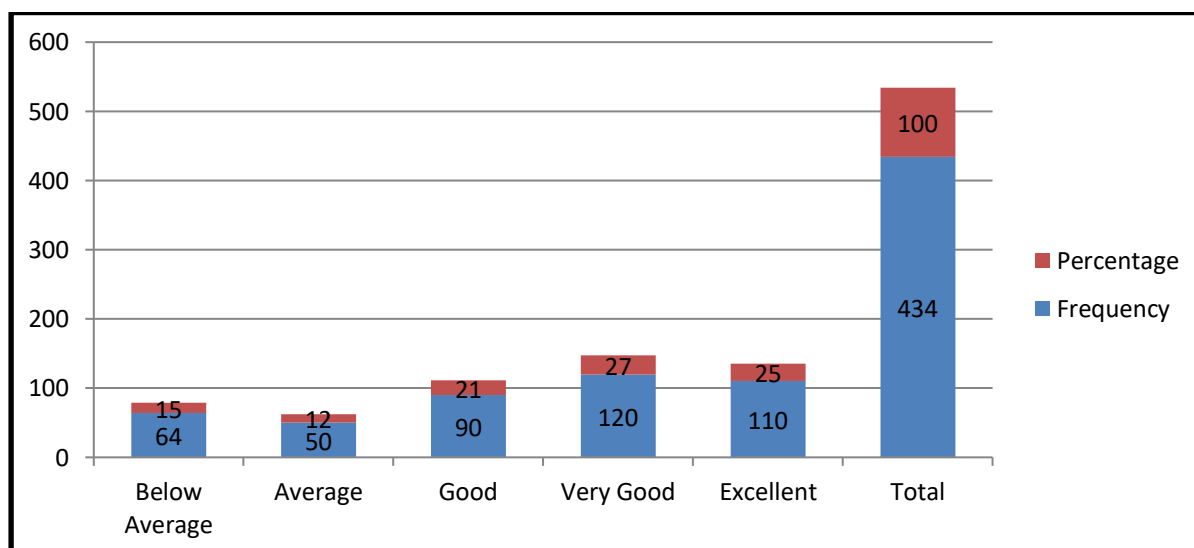


Figure 3.10: Perception of the students about Career counselling/Guidance

It is apparent from the table that the majority of respondents of SVGC Ghumarwin are satisfied with efforts of career counselling cell.

Table 3.11: Perception of the students towards college administration and teachers overall behaviour

Response	Frequency	Percentage
Below Average	7	1.7
Average	13	3.0
Good	58	13.3
Very Good	138	31.7
Excellent	218	50.3
Total	434	100.0

Source: Students survey 2019-2020

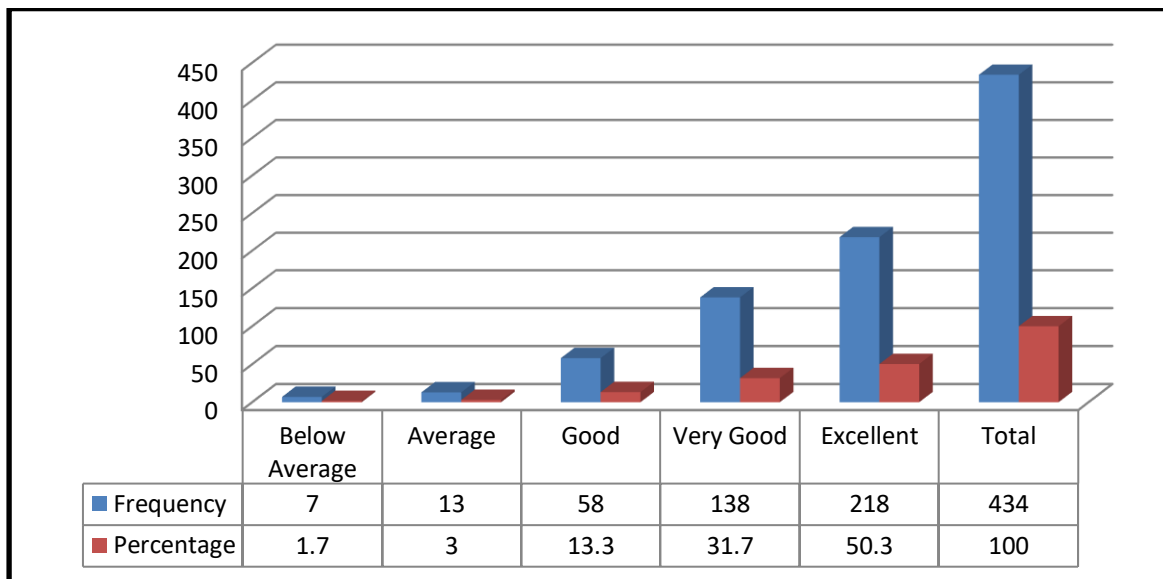


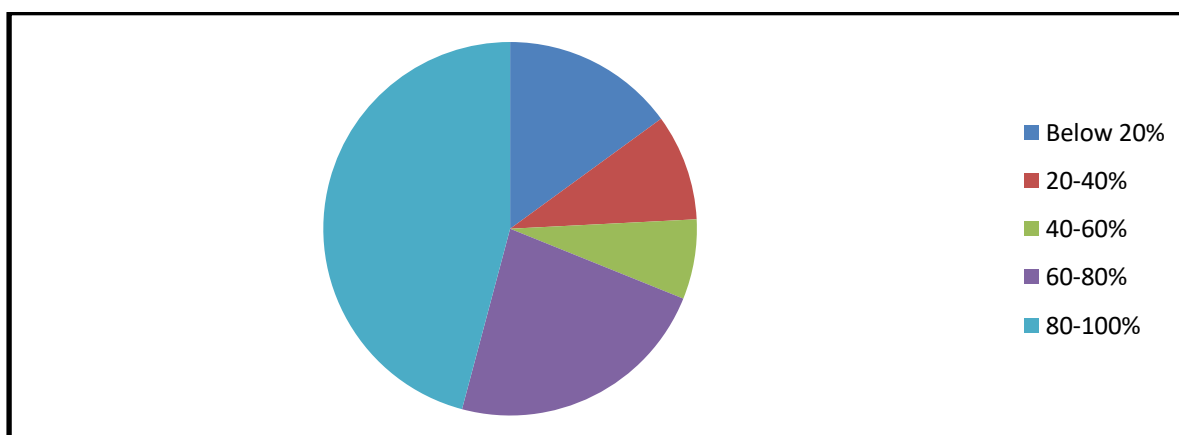
Table 3.11: Perception of the students towards college administration and teachers overall behaviour

It is cleared from the above table that our students of SVGC Ghumarwin are very much happy with the working of college administration and with the behaviour of teachers which is reflected from the survey that more than 50.3% student responds to the excellent behaviour of administration and teaching staff.

Table 3.12: Opinion of the students about coverage of syllabus in the class

Response	Frequency	Percentage
Below 20%	65	14.0
20-40%	40	10.0
40-60%	30	7.0
60-80%	100	23.0
80-100%	199	46.0
Total	434	100.0

Source: Students survey 2019-2020



The opinion of respondents has also been presented with the help of figure as illustrated below:

Figure 3.12: Opinion of the students about coverage of syllabus in the class

Overall 69% Students of the college SVGC Ghumarwin state their above more than 60 % syllabus covered in the class and our almost all the teachers cover their entire syllabus prescribed for the class within specified time.

Table 3.13: Opinion of the students about preparedness of teachers for class

Response	Frequency	Percentage
Won't teach at all	0	0
Indifferently	10	2.3
Poorly	0	0
Satisfactorily	207	47.7
Thoroughly	217	50.0
Total	434	100.0

Source: Students survey 2019-2020

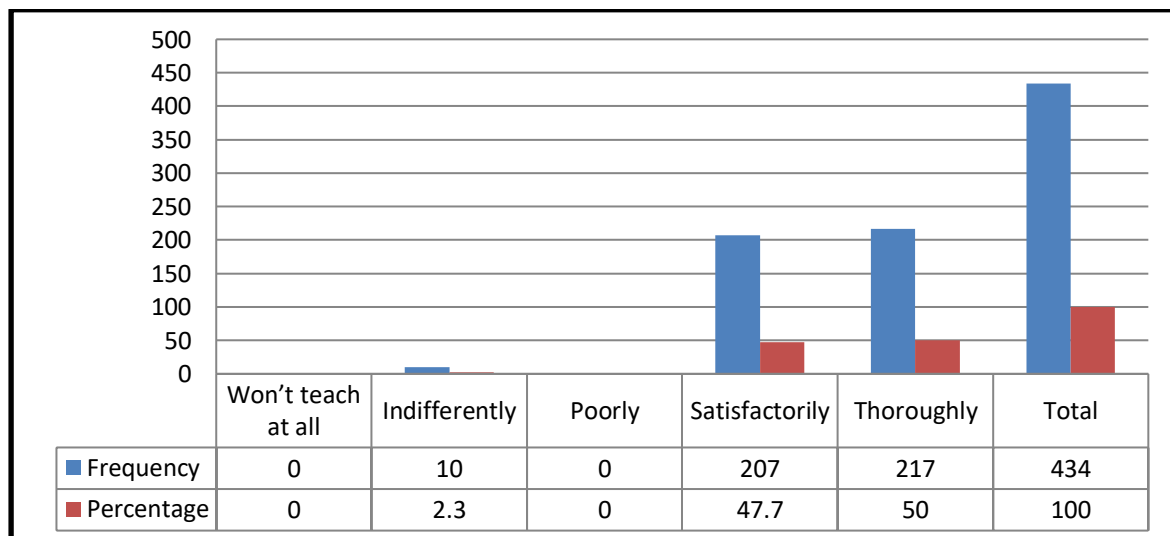


Figure 3.13: Opinion of the students about preparedness of teachers for class

It is examined from the above table that the majority of respondents of SVGC Ghumarwin are satisfied from their teachers' preparedness when they come to attend the class and this is clearly reflected that overall 97.7% students satisfied with the teachers' preparedness.

Table 3.14: Opinion of the students about Teachers ability to communicate

Response	Frequency	Percentage
Very poor communication	0	0
Generally effective	40	9.0
Just satisfactory	50	12.0
Sometimes effective	100	23.0
Always effective	244	56.0
Total	434	100.0

Source: Students survey 2019-2020

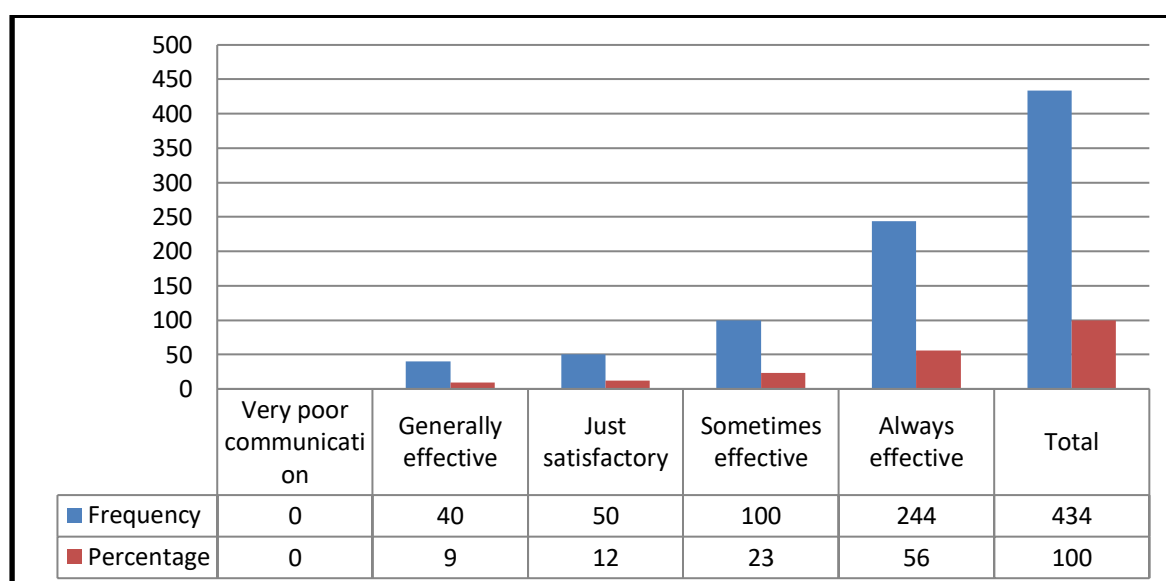


Figure 3.14: Opinion of the students about Teachers ability to communicate.

It is apparent from the table that the 56% students of SVGC Ghumarwin are satisfied from their teachers' ability to effective communicate which results in healthy student-teacher relations.

Table 3.15: Opinion of the students about fairness of internal evaluation process by the teachers

Response	Frequency	Percentage
Unfair	6	1.3
Usually unfair	6	1.3
Sometimes fair	25	5.7
Usually fair	149	34.3
Always Fair	248	57.3
Total	434	100.0

Source: Students survey 2019-2020.

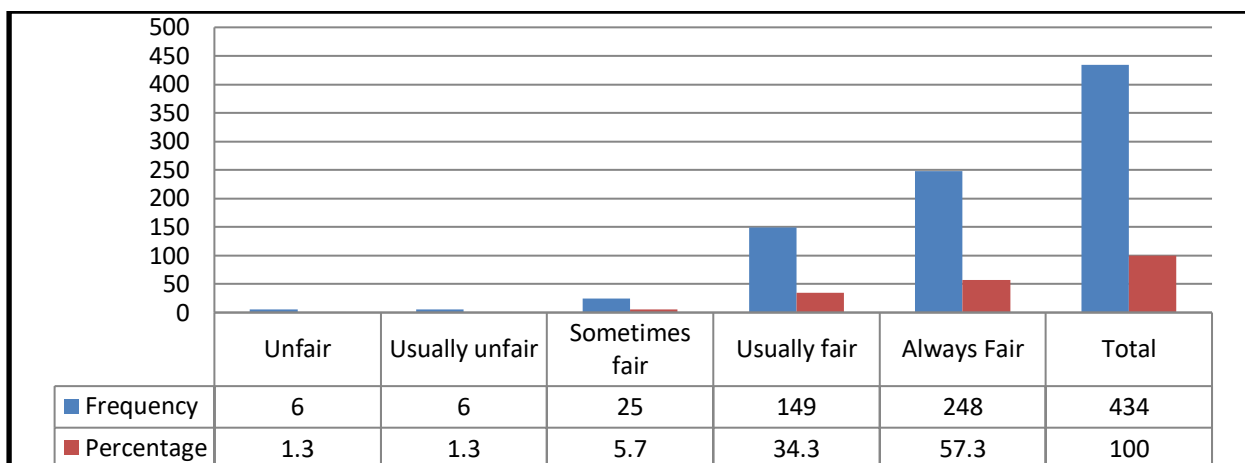


Figure 3.15: Opinion of the students about fairness of internal evaluation process by the teachers.

The teachers of SVGC Ghumarwin are fair during the internal evaluation of students which is clear from the above table that the majority of respondents i.e. 91.6 % students gives their remarks for the teachers as a fair and effective evaluators.

Table 3.16: Opinion of the respondents about discussion of performance in assignments with the students

Response	Frequency	Percentage
Never	9	2.0
Rare	30	7.0
Occasionally	80	18.0
Usually	135	31.0
Every time	180	42.0
Total	434	100.0

Source: Students survey 2019-2020

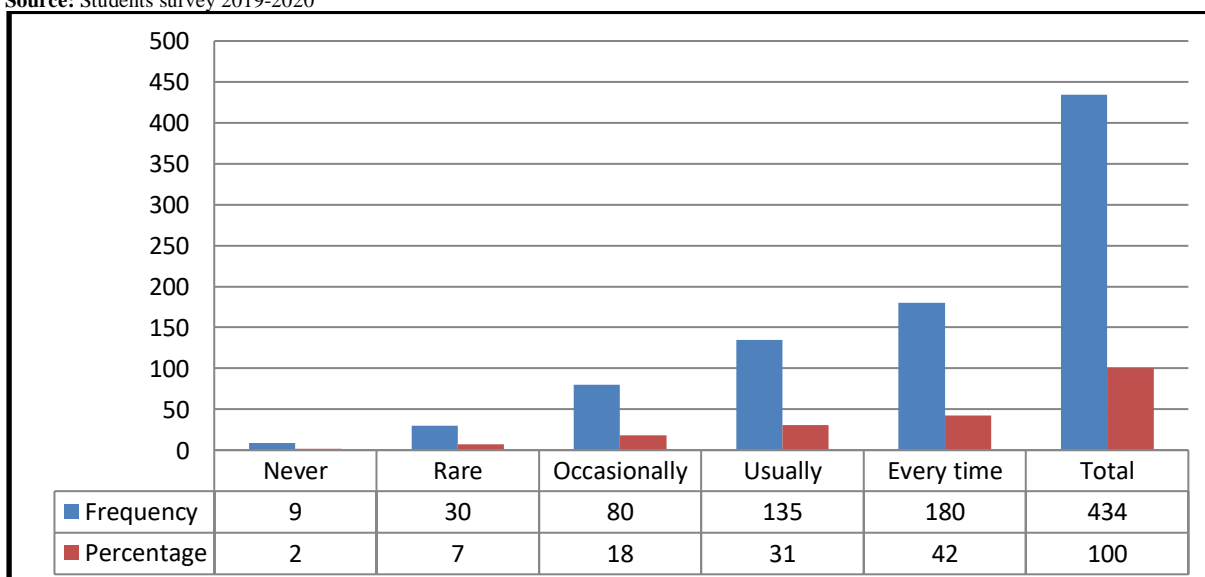


Figure 3.16: Opinion of the respondents about discussion of performance in assignments with the students

It is apparent from the table and figure mentioned below that the majority of respondents (73%) of SVGC Ghumarwin have given optimistic belief for the discussion of assignments & their performance in class and gives some curative measures in the study hours.

Table 3.17: Opinion of the students about promotion of internship, student exchange and field visits by SVGC Ghumarwin

Response	Frequency	Percentage
Never	33	7.7
Rarely	26	6.0
Sometimes	128	29.3
Often	155	35.7
Regularly	92	21.3
Total	434	100.0

Source: Students survey 2019-2020

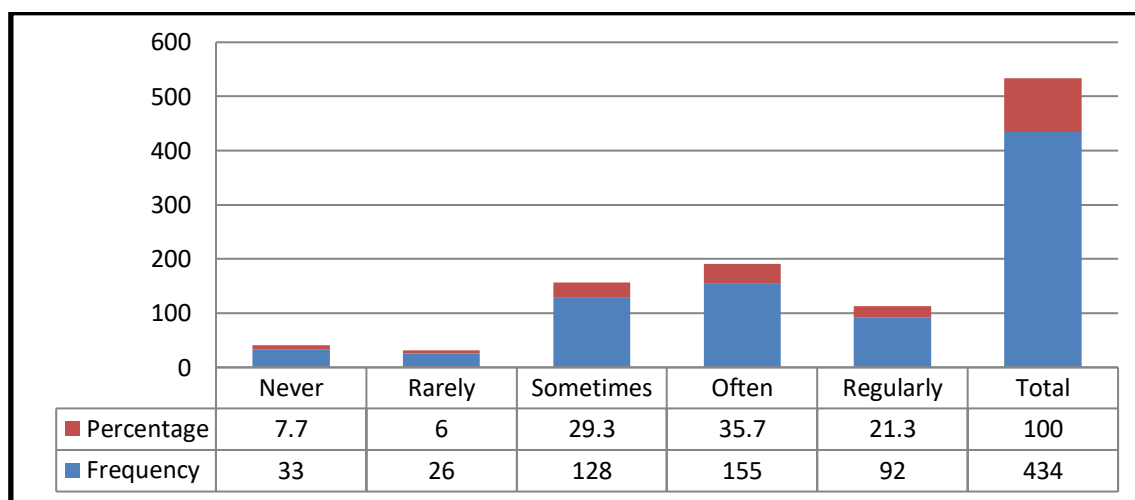


Figure 3.17: Opinion of the students about promotion of internship, student exchange and field visits by SVGC Ghumarwin

It is apparent from the table and figure that the majority of respondents of SVGC Ghumarwin opined that the promotion of internship, student exchange and field visit programme in the college are organised sometimes or often. These responses may have come up due to time bounded coverage of syllabus and requirements of the course.

Table 3.18: Opinion of the students about providing multiple opportunities to learn and grow

Response	Frequency	Percentage
Strongly Disagree	34	7.0
Disagree	40	9.0
Neutral	50	12.0
Agree	180	41.0
Strongly agree	130	30.0
Total	434	100.0

Source: Students survey 2019-2020

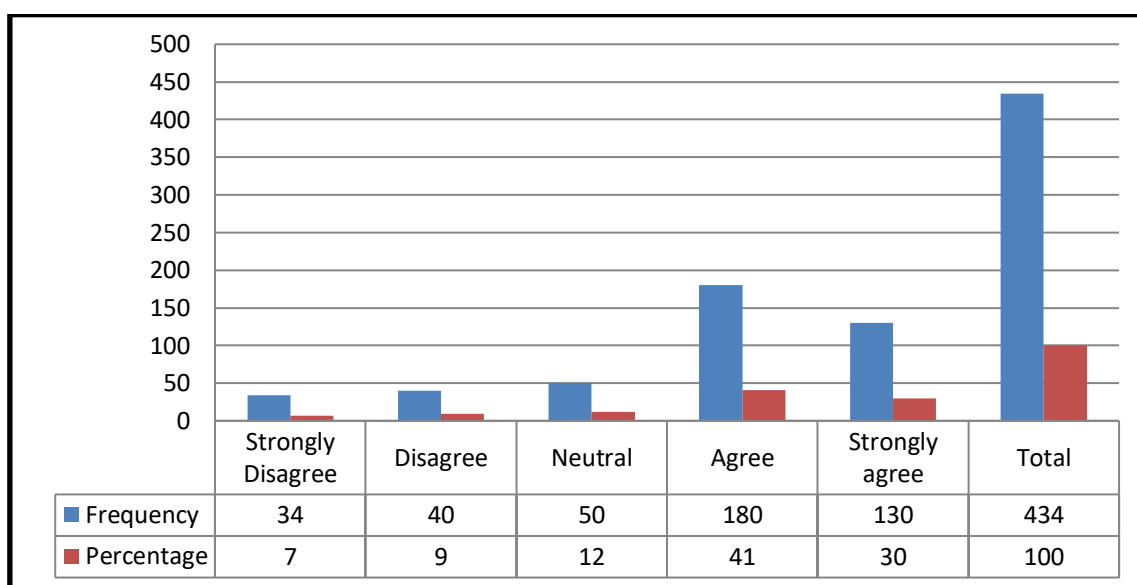


Figure3.18: Opinion of the students about providing multiple opportunities to learn and grow

It is evident from the table that the majority of our students of SVGC Ghumarwin are fully satisfied with the multiple opportunities available in college to learn and grow and it is clearly reflected from our results in academics and sports.

Table 3.19: Opinion of the students about discussion with students about their expected competencies, course outcomes and programme outcomes by the teachers

Response	Frequency	Percentage
Never	7	1.7
Rare	11	2.7
Occasionally	45	10.3
Usually	164	37.7
Every time	207	47.7
Total	434	100.0

Source: Students survey 2019-2020

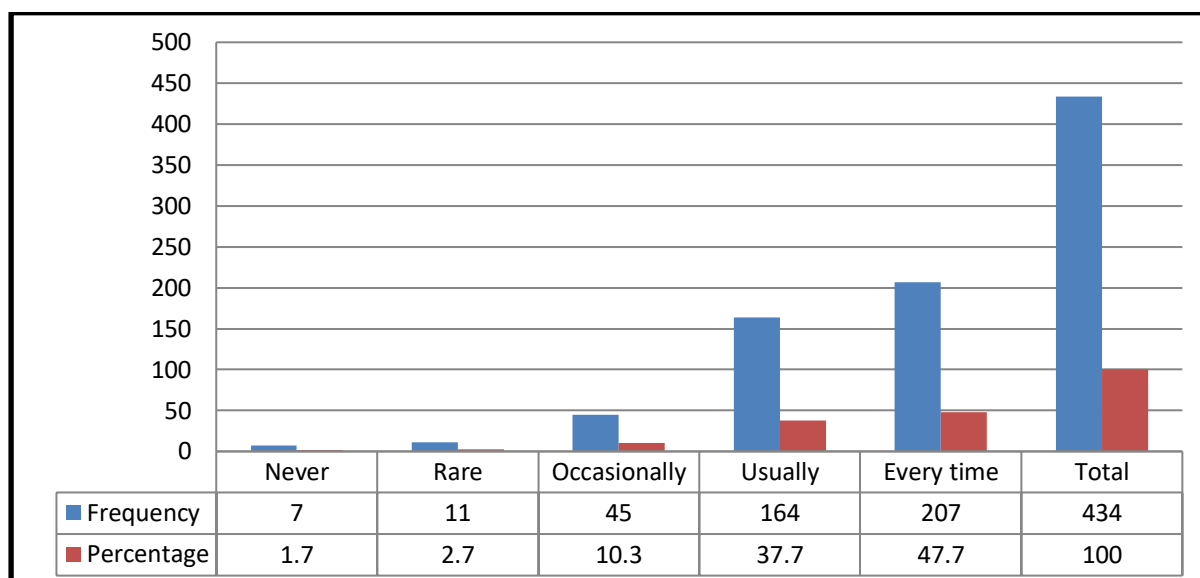


Figure 3.19: Opinion of the students about discussion with students about their expected competencies, course outcomes and programme outcomes by the teachers

It is evident from the above figure and table that the majority of students of SVGC Ghumarwin are in agreement with teacher’s involvement in discussions with students about their expected competencies, course as well as programme outcomes.

Table 3.20: Opinion of the students about ability of teachers to identify and overcome the weaknesses of students

Response	Frequency	Percentage
Never	14	3.0
Rare	20	5.0
Occasionally	80	18.0
Usually	120	28.0
Every time	200	46.0
Total	434	100.0

Source: Students survey 2019-2020

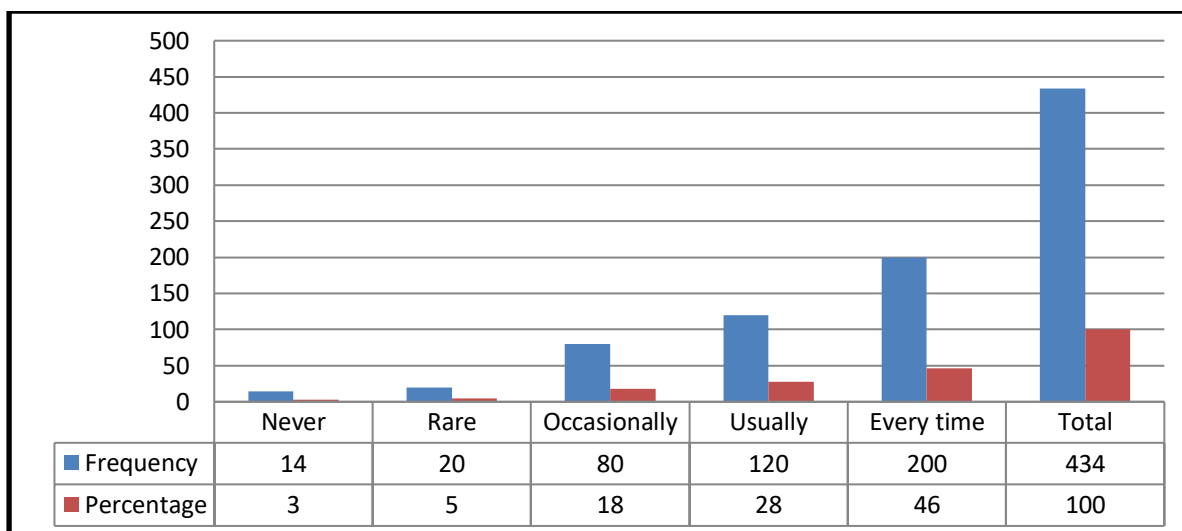


Figure 3.20: Opinion of the students about ability of teachers to identify and overcome the weaknesses of students

It is apparent from the table and figure that the 74 % students of SVGC Ghumarwin are satisfied with teacher’s involvement to identify and discuss their weakness in class as well as individually.

Table 3.21: Opinion of the students about encouragement by teachers to participate in extracurricular activities

Response	Frequency	Percentage
Strongly Disagree	0	0
Disagree	7	1.7
Neutral	53	12.0
Agree	156	36.0
Strongly agree	218	50.3
Total	434	100.0

Source: Students survey 2019-2020

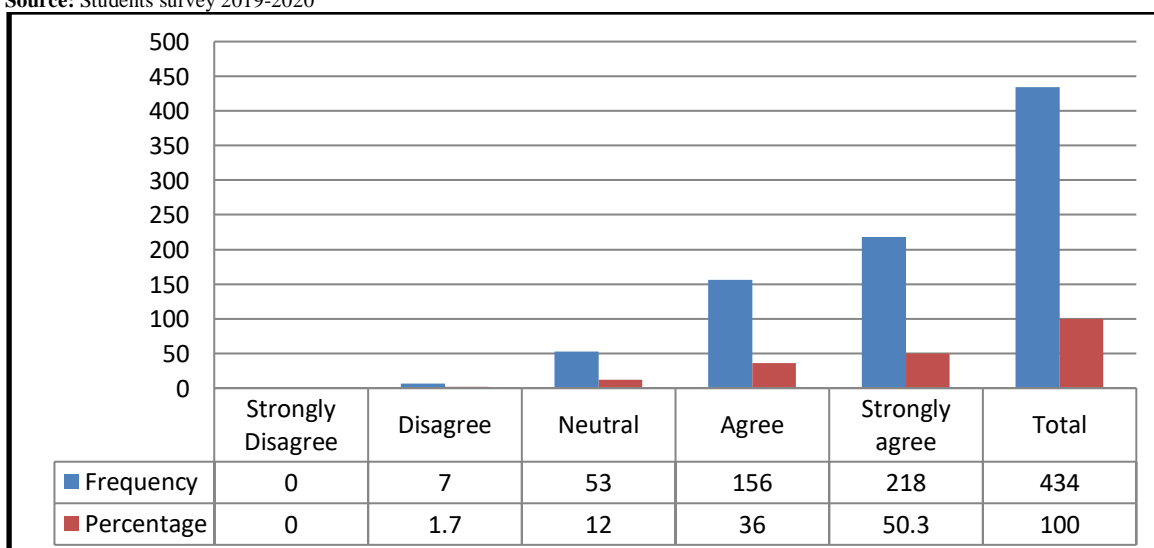


Figure 3.21 Opinion of the students about encouragement by teachers to participate in extracurricular activities

It is apparent from the above table that the (50.3%) respondents strongly agree with the encouragement by the teachers for the students to participate in extracurricular activities.

Table 3.22: Opinion of the students about efforts by SVGC Ghumarwin to inculcate soft skills, life skills and employability skills

Response	Frequency	Percentage
Not at all	19	4.0
Very little	45	10.0
Some what	70	17.0
Moderate	160	37.0
To a great extent	140	32.0
Total	434	100.0

Source: Students survey 2019-2020

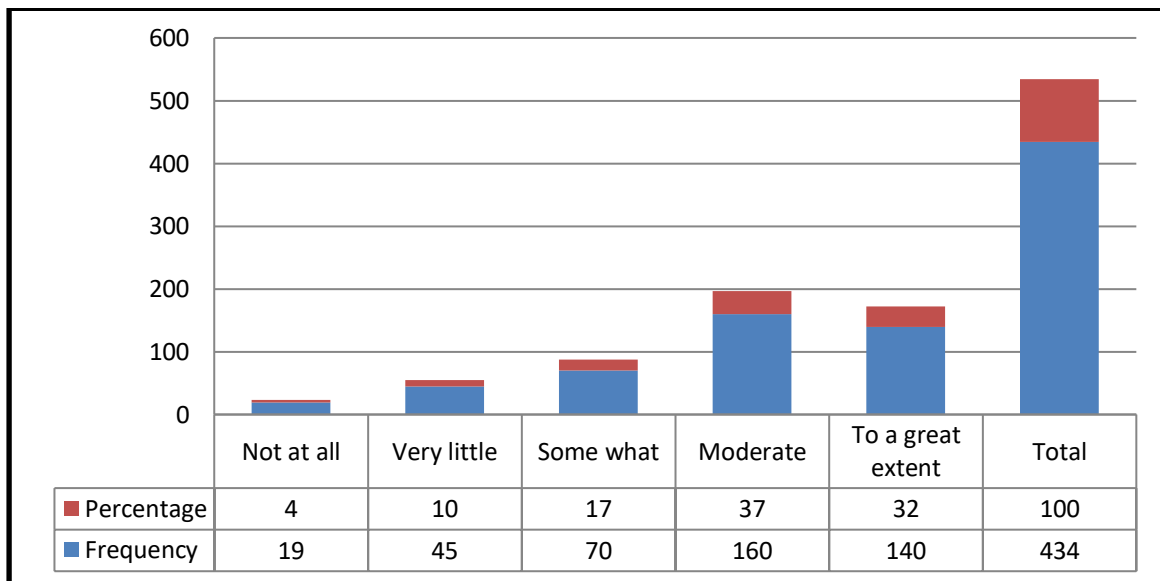


Figure 3.22: Opinion of the students about efforts by SVGC Ghumarwin to inculcate soft skills, life skills and employability skills

It is apparent from the above table and figure that the 32% of respondents of SVGC Ghumarwin gave their satisfaction to a great extent regarding the efforts made by SVGC Ghumarwin to inculcate soft skills, life skills and employability skills in the college.

Table 3.23: Opinion of the students about use of ICT tools during teaching (like LCD, Projectors and Multimedia)

Response	Frequency	Percentage
Below 20%	25	5.7
20-40%	12	2.7
40-60%	82	19.0
60-80%	169	39.0
Above 80%	146	33.7
Total	434	100.0

Source: Students survey 2019-2020

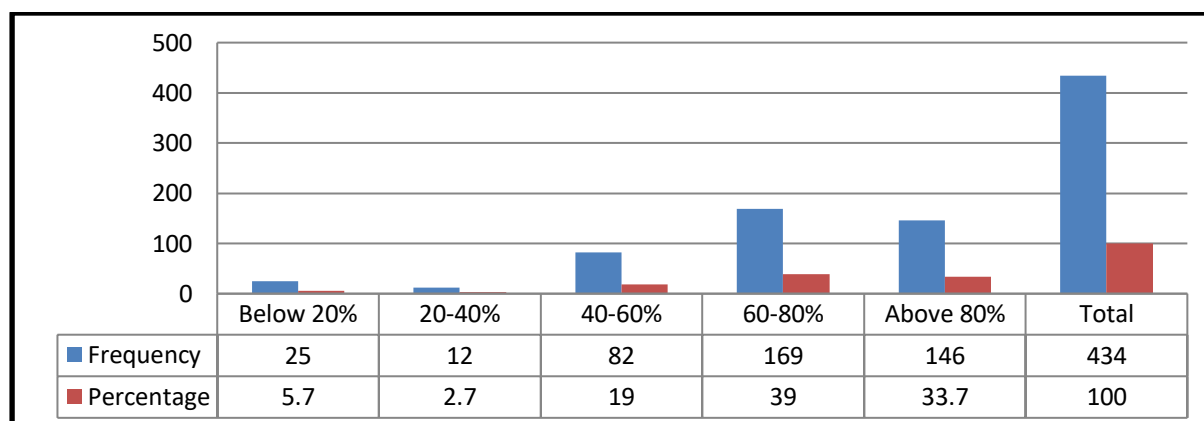


Figure 3.23: Opinion of the students about use of ICT tools during teaching (like LCD, Projectors and Multimedia)

The above table and figure depicts that the 39% of students opined that 60-80% percent and 33.7% students opined that above 80 % syllabus is being taught with the use of ICT tools during teaching like LCD, Projectors, and Multimedia.

Table 3.24: Perception of Students about whether “Teaching-Learning Process of SVGC Ghumarwin is very good”

Response	Frequency	Percentage
Strongly Disagree	9	2.0
Disagree	5	1.0
Neutral	40	10.0
Agree	180	41.0
Strongly agree	200	46.0
Total	434	100.0

Source: Students survey 2019-2020

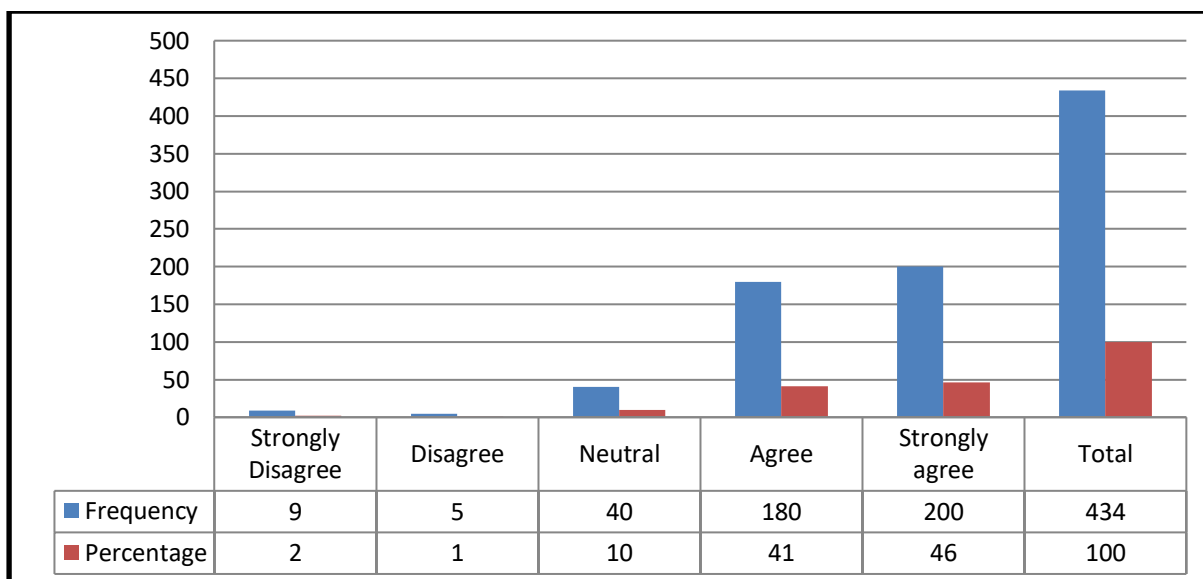


Figure 3.24: Perception of Students about whether “Teaching-Learning Process of SVGC Ghumarwin is very good”

The above figure and table shows the agreement or disagreement with the statement “Teaching-Learning Process of SVGC Ghumarwin is very good” It is evident from these that there has been found a strong agreement by the students about this statement in the present survey which reflects that SVGC Ghumarwin is moving positively towards its “Vision and Mission”.

PART:B- Analysis of the Alumni feedback on teaching and campus facilities of SVGC Ghumarwin:

Table 3.25: Opinion of Alumni towards College campus Environment

Response	Frequency	Percentage
Below Average	2	2.0
Average	4	4.0
Good	35	34.0
Very Good	45	44.0
Excellent	16	16.0
Total	102	100.0

Source: Alumni Survey 2019-2020

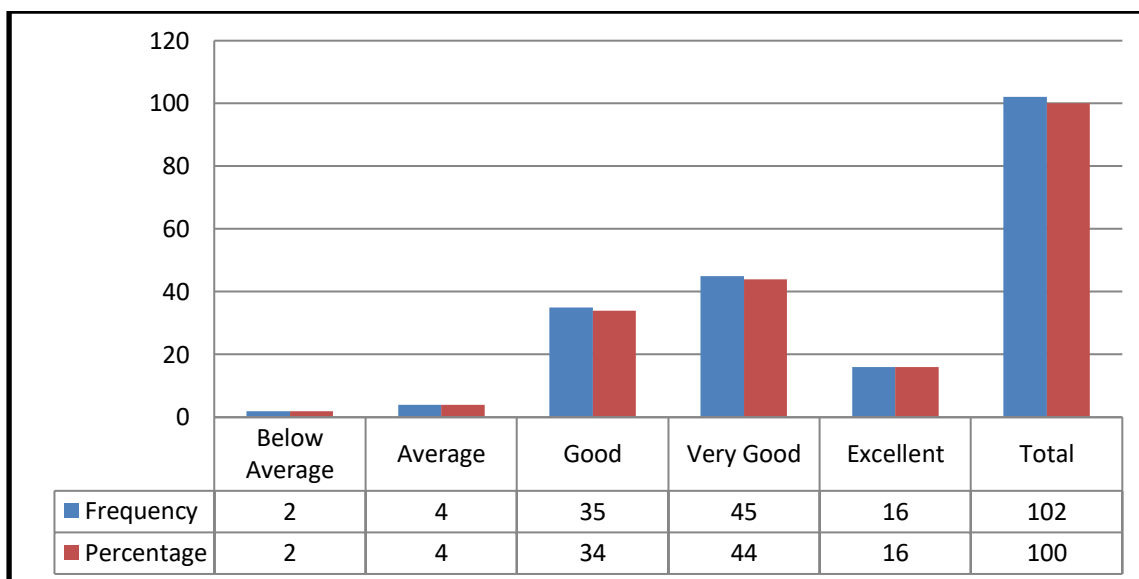


Figure 3.25: Opinion of respondents towards College campus Environment

The above information reveals that 44 % of the alumni have very good perception regarding the campus environment of SVGC Ghumarwin.

Table 3.26: Opinion of respondents towards College Teaching Standards

Response	Frequency	Percentage
Below Average	4	4.0
Average	5	5.0
Good	24	24.0
Very Good	43	42.0
Excellent	26	25.0
Total	102	100.0

Source: Alumni Survey 2019-2020

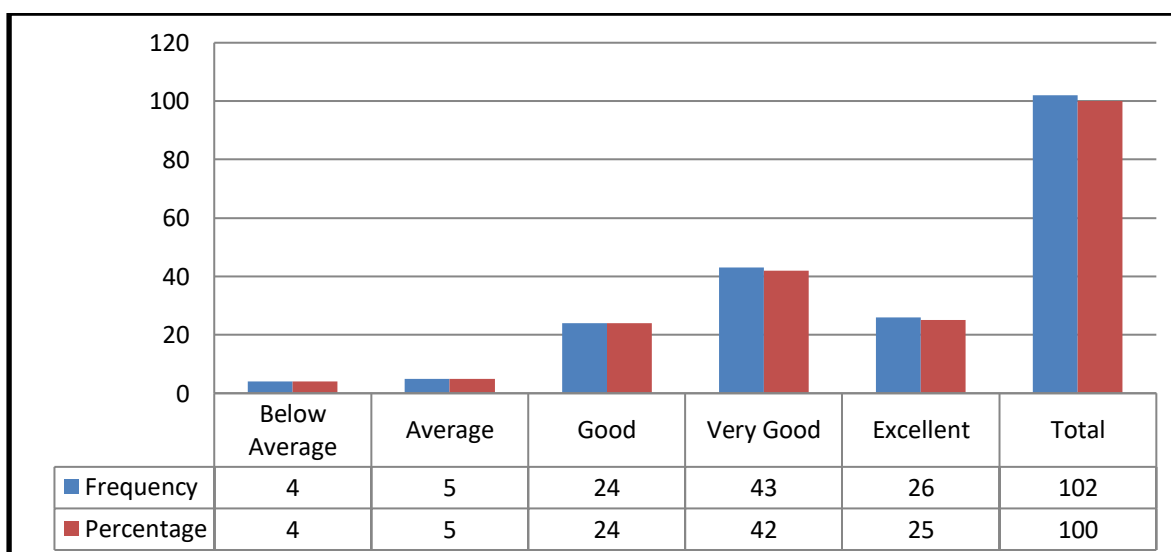


Figure.3.26 Opinion of respondents towards College Teaching Standards

It is apparent from the table that the majority of respondents have described that college has best standard of teaching and it is matched with the results of the college and placement of alumni.

Table 3.27: Opinion of respondents towards Quality of Lab Training in the college

Response	Frequency	Percentage
Below Average	8	8.0
Average	22	22.0
Good	47	46.0
Very Good	15	14.0
Excellent	10	10.0
Total	102	100.0

Source: Alumni Survey 2019-2020

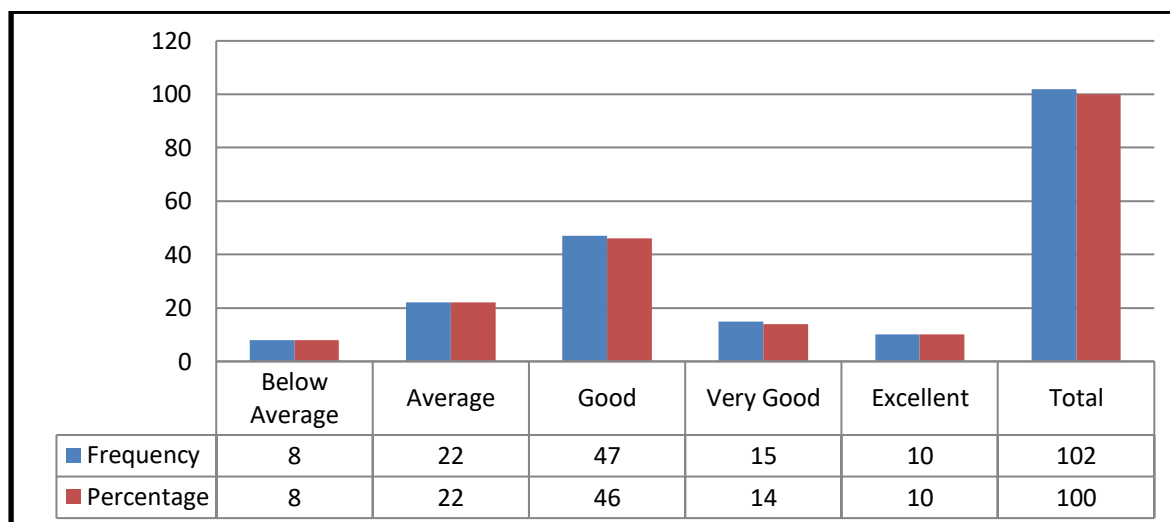


Figure.3.27 Opinion of respondents towards Quality of Lab Training in the college

It is apparent from the above table that the majority of respondents believe that the Quality of Lab Training in the college is more than the average standard and labs were adequate and accessible to all the students as per their requirements.

Table 3.28: Opinion of respondents towards Student Amenities provided by the college

Response	Frequency	Percentage
Below Average	10	10.0
Average	10	10.0
Good	48	47.0
Very Good	22	21.0
Excellent	12	12.0
Total	102	100.0

Source: Alumni Survey 2019-2020.

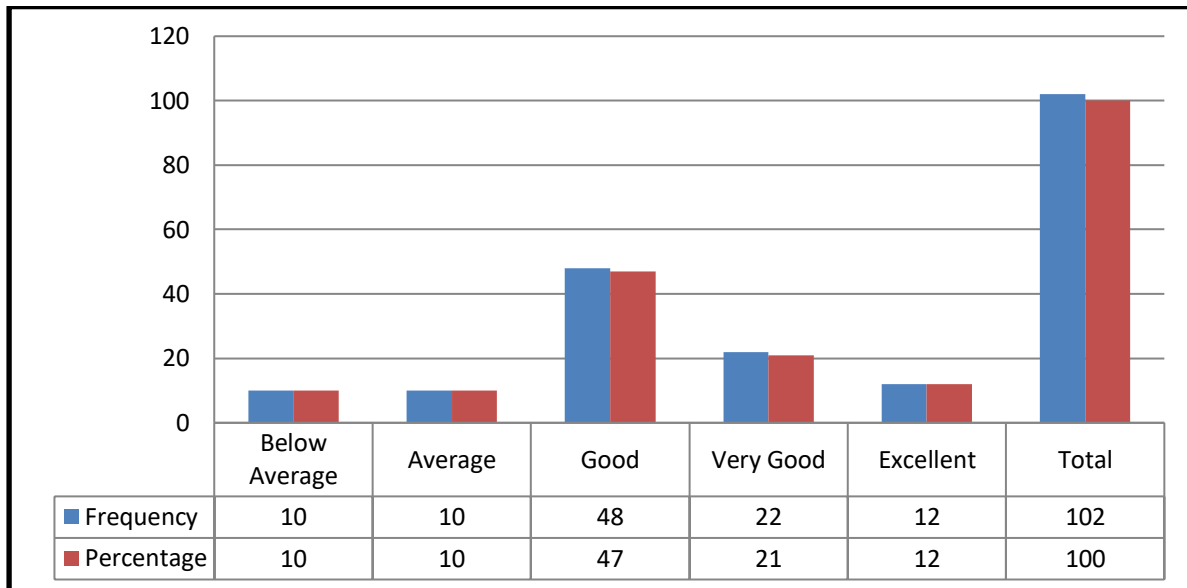


Figure 3.28: Opinion of respondents towards Student Amenities provided by the college

It is apparent from the table that the majority of respondents accepted that Student Facilities available in the college is above than the average value and they express their satisfaction with college facilities by rating their level of agreement.

Table 3.29: Opinion of respondents towards Assessment and Examination System of college

Response	Frequency	Percentage
Below Average	4	4.0
Average	12	12.0
Good	27	26.0
Very Good	35	34.0
Excellent	24	24.0
Total	102	100.0

Source: Alumni Survey 2019-2020.



Figure 3.29: Opinion of respondents towards Assessment and Examination System of college

It is apparent from the table that the majority of respondents agreed with the statement that the assessment and Examination System of college is very good and internal assessment was fair as per their performance.

Table 3.30: Opinion of respondents towards Overall rating of Teachers of SVGC Ghumarwin

Response	Frequency	Percentage
Below Average	10	10.0
Average	16	16.0
Good	40	39.0
Very Good	36	35.0
Excellent	0	0.0
Total	102	100.0

Source: Alumni Survey 2019-2020

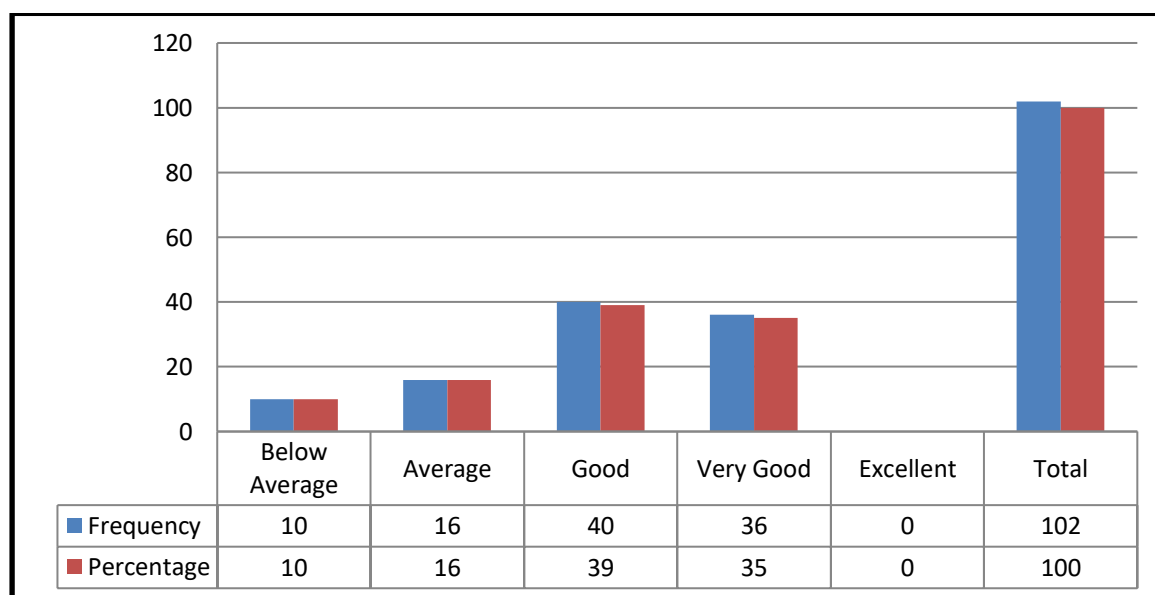


Figure 3.30: Opinion of respondents towards Overall rating of Teachers of SVGC Ghumarwin

It is apparent from the table that the majority of respondents have express their satisfaction for overall rating of teachers in SVGC Ghumarwin.

Table 3.31: Opinion of respondents towards Overall rating of SVGC Ghumarwin

Response	Frequency	Percentage
Below Average	2	2.0
Average	10	10.0
Good	24	24.0
Very Good	37	36.0
Excellent	29	28.0
Total	102	100.0

Source: Alumni Survey 2019-2020

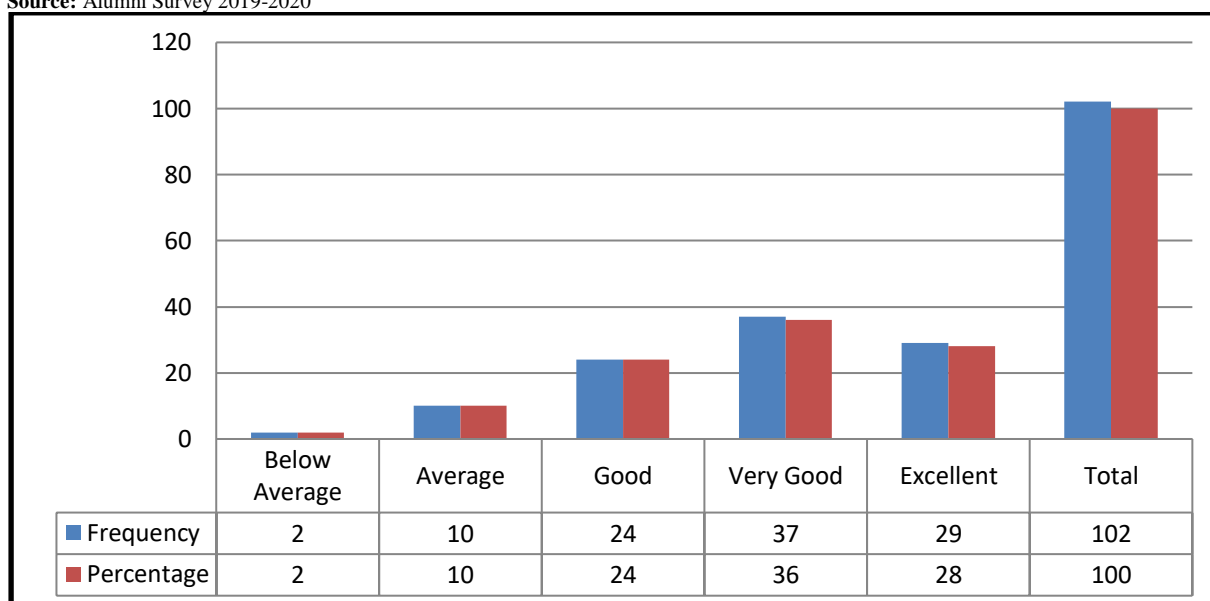


Figure 3.31: Opinion of respondents towards Overall rating of SVGC Ghumarwin

It is apparent from the table that the approximate above than 60 % majority of respondents have labelled the SVGC Ghumarwin is best college in the area and growing well as per its Vision and Mission.

Table 3.32: Public perception towards SVGC Ghumarwin

Response	Frequency	Percentage
Below Average	4	4.0
Average	8	8.0
Good	42	41.0
Very Good	28	27.0
Excellent	20	20.0
Total	102	100.0

Source: Alumni Survey 2019-2020

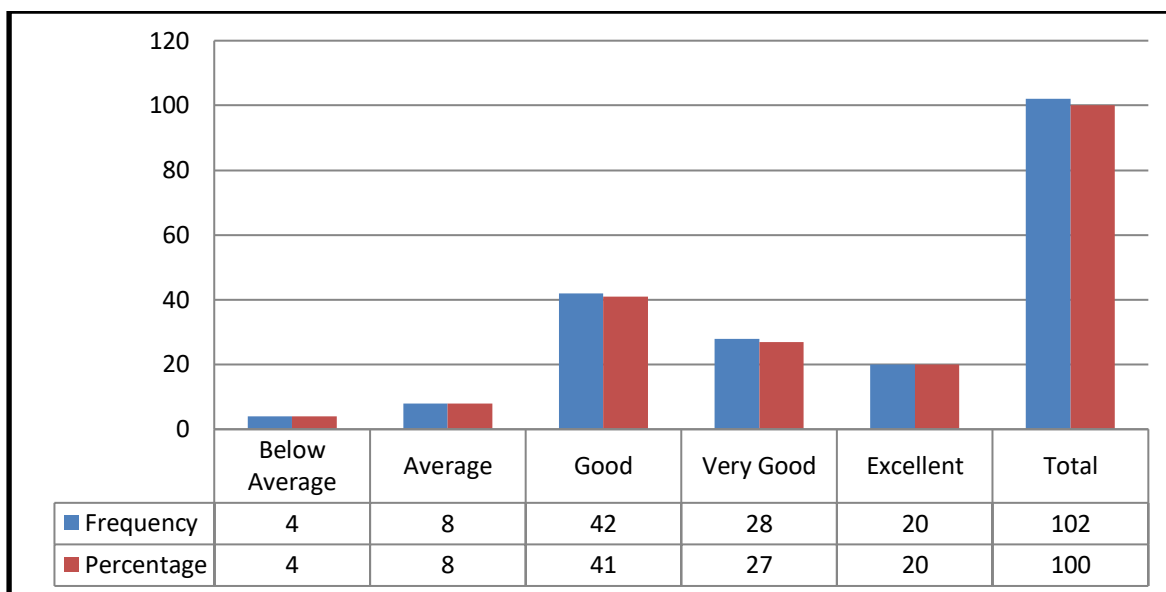


Figure 3.32: Public perception towards SVGC Ghumarwin

41% Core values play a very important role in undermining positive perceptions of institution and this can be reflected from the table that the majority of respondents have labelled the SVGC Ghumarwin is best college in the area and growing well as per its core values.

TEACHER'S FEEDBACK ANALYSIS

PART: C- Analysis of the Teacher's feedback on teaching and campus facilities of SVGC Ghumarwin:

Teachers are responsible for building human characters, the peace and development of a progressive society. A teacher's perception of different important subjects will build a person's opinion. Keeping in view the importance of teachers for students and for an institution an attempt has been made to examine the perception of teachers regarding existing curriculum being taught in SVGC Ghumarwin and to invite suggestions for improvements.

Table 3.33: Satisfaction with the contents of syllabus taught by teachers

Response	Frequency	Percentage
No comment	0	0
Not satisfied	3	6.7
Satisfied to some extent	16	33.3
Satisfied	29	60.0
Total	48	100.0

Source: Teachers Survey 2019--2020

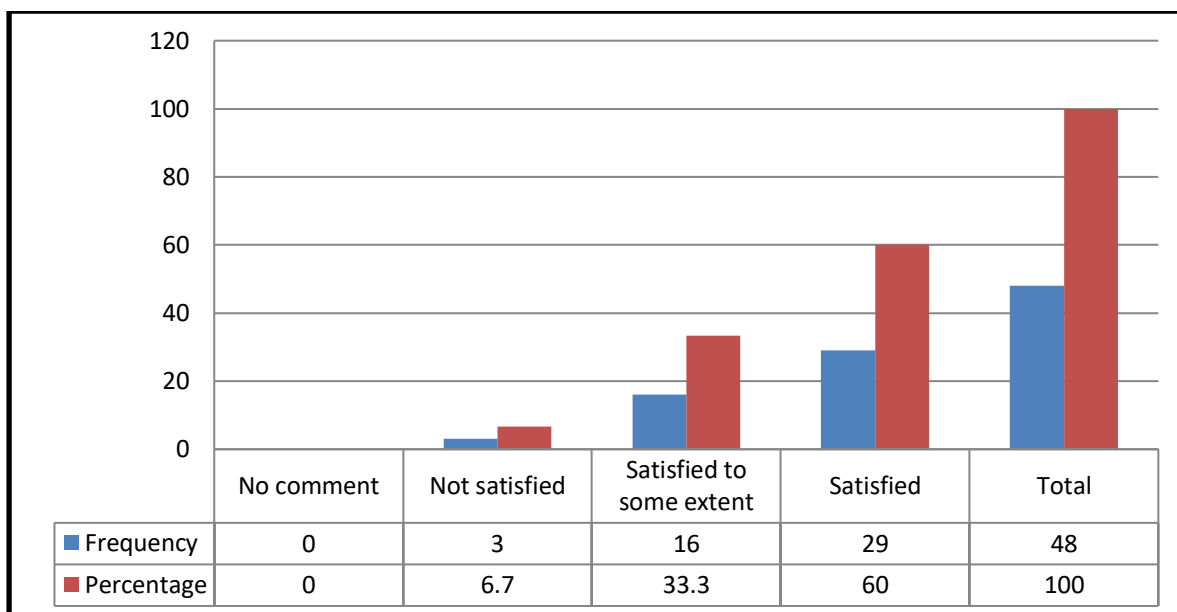


Figure 3.33: Satisfaction with the contents of syllabus taught by teachers

It is evident from the above table that 60 percent of the respondents are satisfied with the syllabus taught by them, whereas 33.3 percent of the teachers are found satisfied to some extent only.

Table 3.34: Opinion of the teachers regarding statement “Whether the course contents are Job Oriented”?

Response	Frequency	Percentage
No comment	7	15.0
Do not agree	25	51.0
Agree	9	19.0
Strongly agree	7	15.0
Total	48	100.0

Source: Teachers Survey 2019-2020

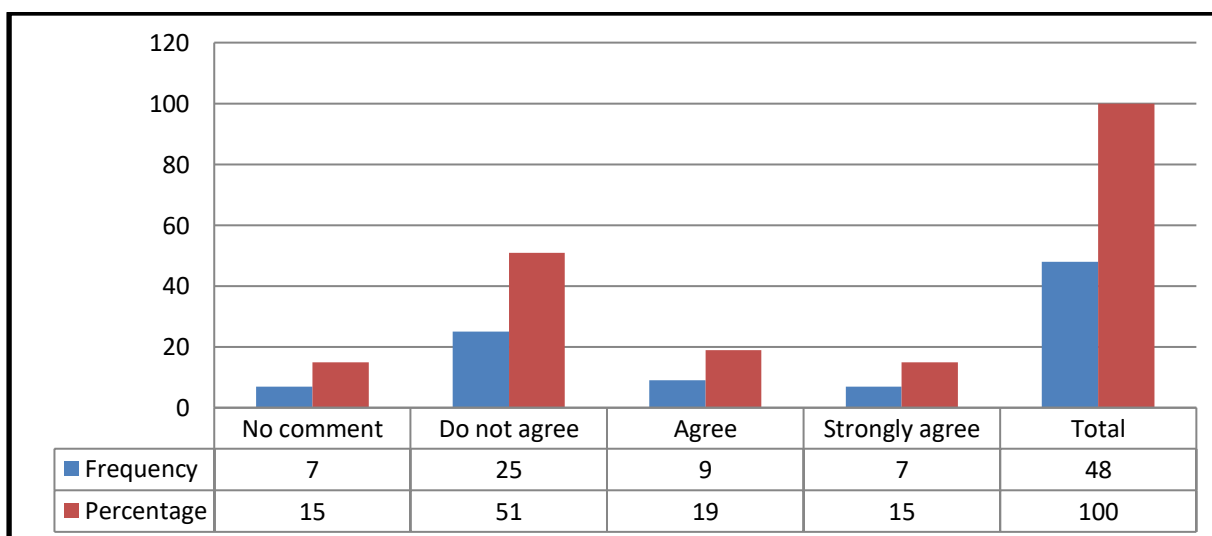


Figure 3.34: Teachers regarding statement “Whether the course contents are Job Oriented”?

Given table and figure reveals that half of the respondents showed dissatisfaction with course contents in context of its creation of employability skills.

Table 3.35: Opinion of the teachers regarding need to start some additional value added job oriented courses

Response	Frequency	Percentage
No	19	40.0
Yes	29	60.0
Total	48	100.0

Source: Teachers Survey 2019-2020

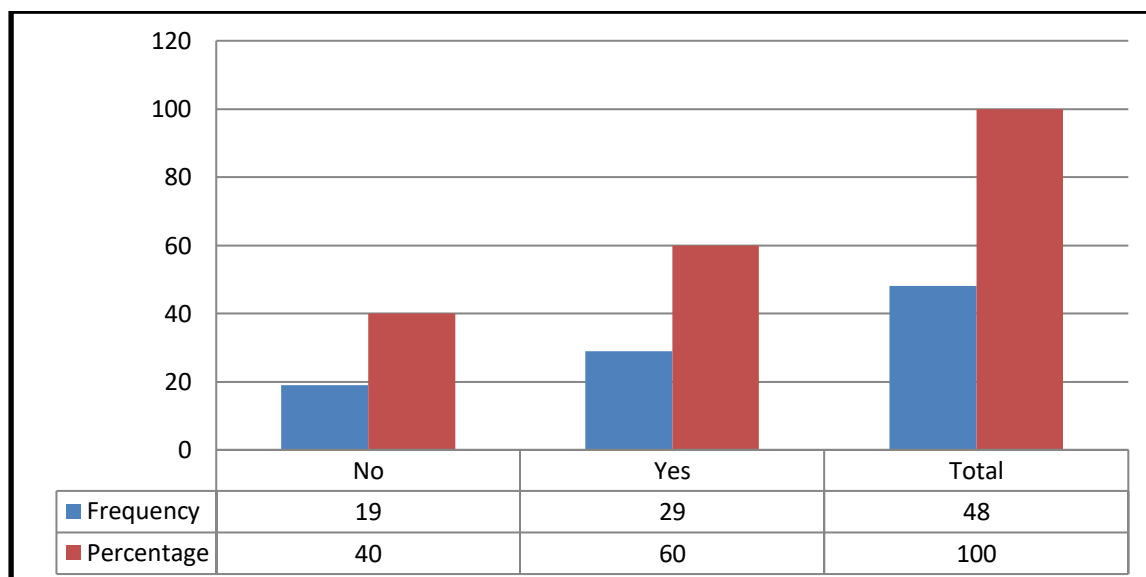


Figure 3.35: Opinion of the teachers regarding need to start some additional value added job oriented courses

The above table and graph shows a mixed opinion where maximum number of the respondents showed a strong need to start some additional value added job oriented courses in existing curriculum whereas others not.

Table 3.36: Opinion of the teachers regarding need to change in the syllabus of course by Board of Studies

Response	Frequency	Percentage
Need not arise	4	8.0
No	20	42.0

Yes	24	50.00
Total	48	100.0

Source: Teachers Survey 2019-2020

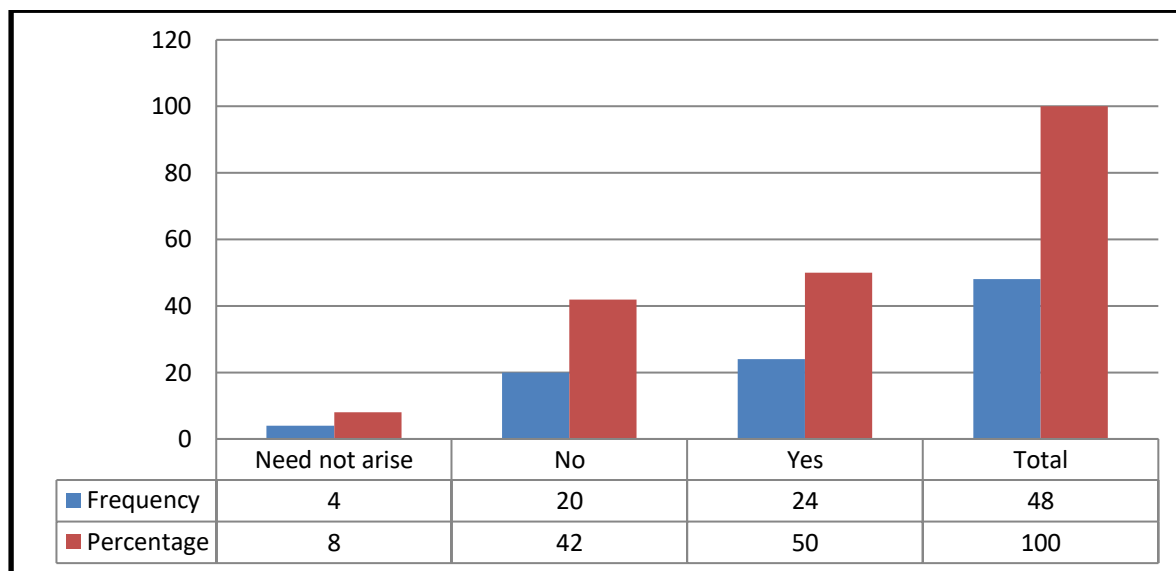


Figure 3.36: Opinion of the teachers regarding need to change in the syllabus of course by Board of Studies

The above table and figure presents the opinion of teachers regarding need for change in the syllabus of course by Board of Studies. As evident from these, there has been found an asymmetry over this statement where 42 percent of teachers denied for any change in course syllabus, whereas 50 percent teachers showed their concern for change in the syllabus.

Table 3.37: Opinion of the teachers regarding statement “CBCS is better than Previous Annual system”

Response	Frequency	Percentage
Any other option	5	10.0
No	38	80.0
Yes	5	10.0
Total	48	100.0

Source: Teachers Survey 2019-2020

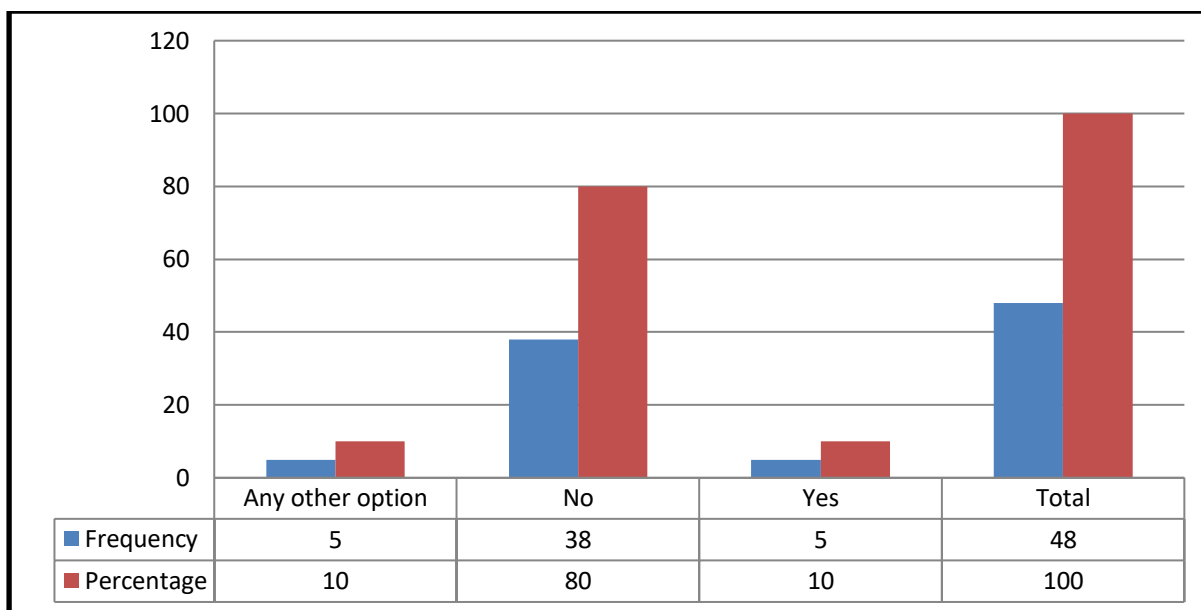


Figure 3.37: Opinion of the teachers regarding statement “CBCS is better than Previous Annual system”

The above table and figure presents the opinion of teachers regarding comparison of annual system with the CBCS system. As evident from the table maximum number of the teachers considered that old annual system was much better than the CBCS system which has become operational w.e.f. academic session 2013-14.

Table 3.38: Opinion of the teachers regarding statement “College education should be universal”

Response	Frequency	Percentage
Don't Know	5	10.0
No	7	15.0
Not Necessary	8	17.0
Yes	28	58.0
Total	48	100.0

Source: Teachers Survey 2019-2020.

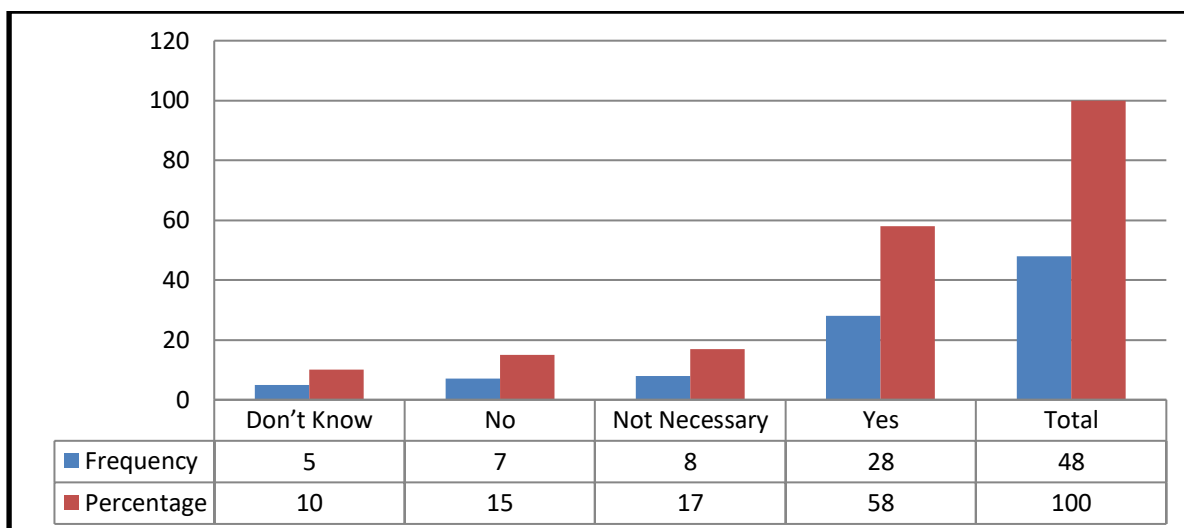


Figure 3.38: Opinion of the teachers regarding statement “College education should be universal”

The table and figure presented as above shows the opinion of teachers regarding the statement “College education should be universal” As evident from the figure majority of the teachers opined that the college education should be universal in all respects.

Table 3.39: Opinion of the teachers regarding prospective change in syllabus to make students employable in private sector

Response	Frequency	Percentage
No Comment	5	10.0
Do not agree	12	26.7
Agree	21	43.3
Strongly agree	10	20.0
Total	48	100.0

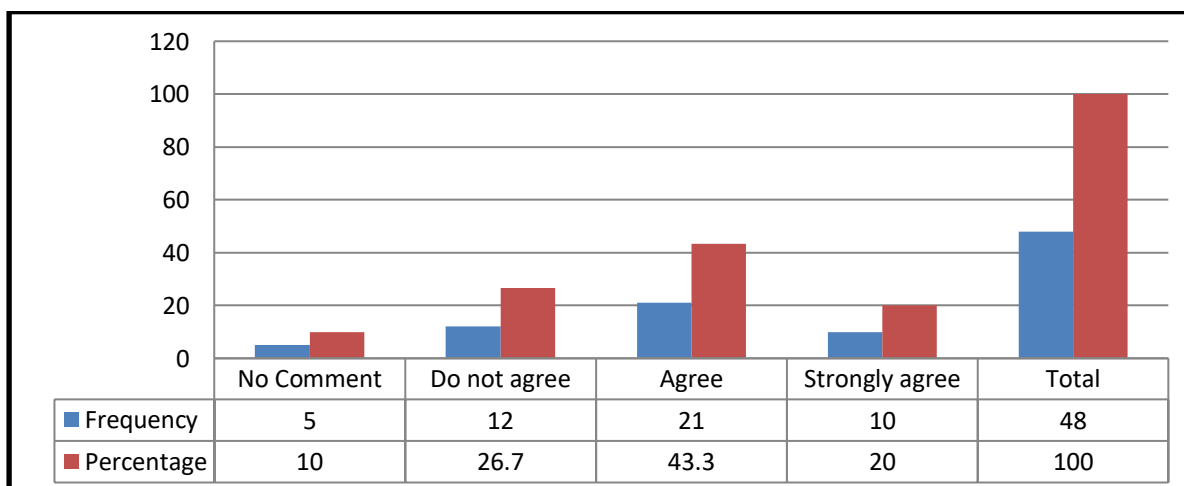


Figure 3.39: Opinion of the teachers regarding prospective change in syllabus to make students employable in private sector

It is evident from the figure and table presented above that there is a strong need to change in syllabus to make students employable in private sector.

Table 3.40: Opinion of teachers regarding introduction of skill components in their courses

Response	Frequency	Percentage
Yes	25	52.00
No	23	48.00
Total	48	100.0

Source: Teachers Survey 2019-2020.

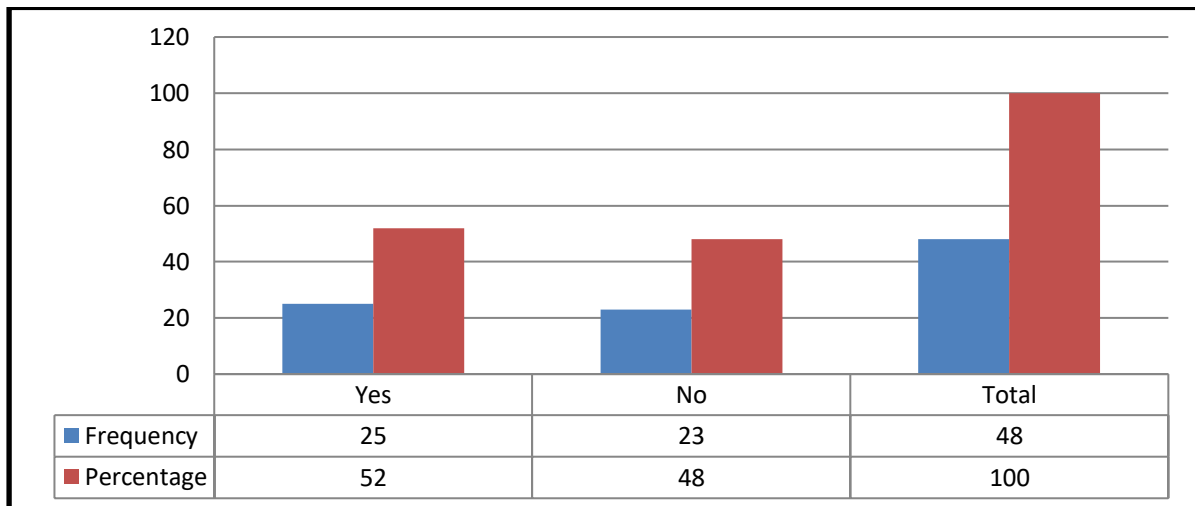


Figure 3.40: Opinion of teachers regarding introduction of skill components in their courses

As evident from the above table 52 percent of the respondents urged to introduce skill components in their courses whereas other 48 percent of respondents didn't felt any need to introduce such components in their subjects. These differences may have aroused due to the nature and existing contents of courses.

Table 3.41: Any comment from teachers about syllabus taught in institution

Response	Frequency	Percentage
Yes	37	76.7
No	11	23.3
Total	48	100.0

Source: Teachers Survey 2019-2020.

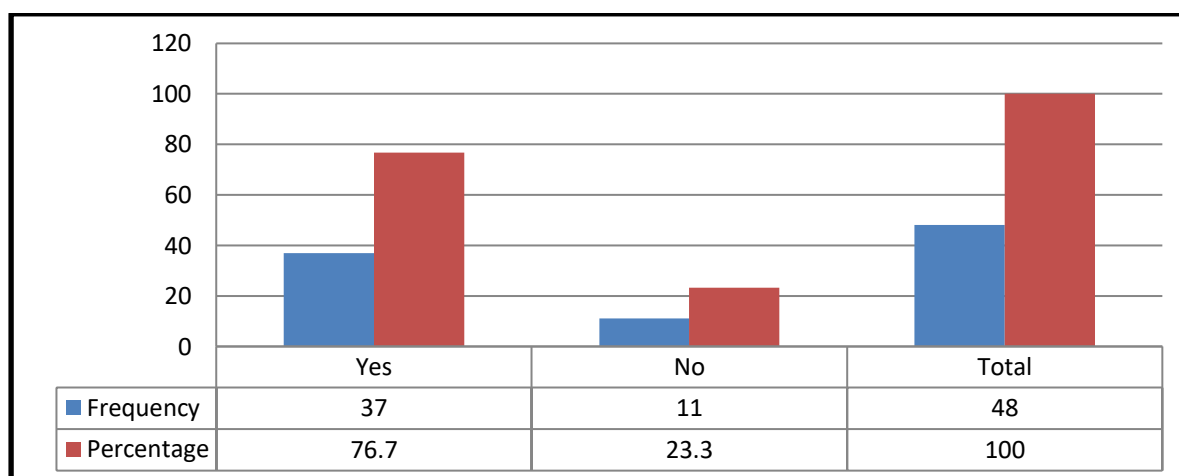


Figure 3.41: Any comment from teachers about syllabus taught in institution

The above table presents the concern of the teachers over the syllabus taught in SVGC Ghumarwin by putting valuable suggestions as summarised below:

Section-IV

CONCLUSIONS AND SUGGESTIONS

CONCLUSIONS:-

The present survey has been undertaken with the objectives to study the perception and satisfaction level of students and alumni towards campus facilities and teaching learning process of Swami Vivekanand Government College Ghumarwin and to check the perception and satisfaction level of teachers towards different aspects of curriculum taught by teachers. The present survey is based on an overall sample of 584 respondents including students, alumni and teachers of different departments of SVGC Ghumarwin during 2019-2020. The results of this survey are summarised as under:-

Student survey analysis shows that most of the students are satisfied with college infrastructure facilities like campus facilities, cleanliness of the campus, Canteen facilities, Transport connectivity, medical, sports, career counselling received positive feedback. Majority of Students of the college SVGC Ghumarwin state that maximum syllabus covered in the class and all the teachers cover their entire syllabus prescribed for the class within specified time.

It is also found that the majority of respondents (97.7% student) are satisfied with the teachers' preparedness when they come to attend the class. The survey revealed that the teachers of SVGC Ghumarwin are fair during the internal evaluation of students. 91.6 % students give their remarks for the teachers as fair and effective evaluators. It is also found that the majority of our students of SVGC Ghumarwin are fully gratified with the multiple opportunities available in college to learn and grow and it is clearly reflected from our results in academics and sports. 39% of students opined that 60-80% percent and 33.7% students opined that above 80 % syllabus is being taught with the use of ICT tools like LCD, Projectors, and Multimedia during teaching.

Most of students of this Institute perceive that teachers involve themselves to identify and discuss their weakness in class as well as individually and help students to inculcate soft skills, life skills and employability skills in the college. It is found that the majority of respondents of SVGC Ghumarwin opined that the promotion of internship, student exchange and field visit programme in the college are organised sometimes or often.

The students responded that teaching learning process of the college on the positive sides towards its "Vision and Mission" in terms of coverage of syllabus, communication skills and ability of teachers to identify and overcome weaknesses, teachers encouragement to participate in extracurricular activities, internal evaluation process of the college, institution's efforts to provide multiple opportunities to learn and to encourage soft skills, life skills and employability skills among the students. On the other hand the students showed satisfaction to the lower side in terms of promotion of internship, student exchange, field visits and use of ICT tools during teaching. 44 % of the alumni have very good perception regarding the campus environment of SVGC Ghumarwin and described that college has best standard of

teaching and it is matched with the results of the college and placement of alumni. They also believe that the Quality of Lab Training in the college is more than the average standard and labs were adequate and accessible to all the students as per their requirements. Majority of respondents have labelled the SVGC Ghumarwin is best college in the area and growing well as per its Vision and Mission.

There is a mixed opinion regarding the existing curriculum, maximum number of the respondents showed a strong need to start some additional value added job oriented courses in existing curriculum whereas others not.

The suggestion of teachers regarding comparison of annual system with the CBCS system that old annual system was much better than the CBCS system which has become operational w.e.f. academic session 2013-14. Teachers also suggested that “College education should be universal “in all respects.

SUGGESTIONS:-

1. The institute should introduce more PG Programs for the benefit of students of nearby rural area.
2. Institute should develop better research infrastructure for teachers and students.
3. Faculty programs and conferences should be organised annually.
4. Faculty programs and conferences should be organised annually.
5. Industrial or educational visits should be organized by every department of institute.
6. There should be boys’ hostel and additional girls’ hostel.
7. Online admission facility should be there to reduce the crowd.
8. Enhance better internet speed.
9. The institute should enhance smart class-room infrastructure.
10. Job- oriented and Add-On courses should be introduced.
11. Improve teachers students taught ratio.
12. Fully fledged play ground should be there.
13. There should be particular campus placement cell in the institute which invite companies for campus placement for professional courses like BBA, BCA.