

**SWAMI VIVEKANAND GOVERNMENT COLLEGE GHUMARWIN DISTT. BILASPUR
(H.P.)**

A REPORT ON

**STUDENT SATISFACTION SURVEY
ON TEACHING-LEARNING AND CAMPUS FACILITIES**

SESSION: 2022-23



Estd. 1994

This college being named after a great visionary, spiritual leader Swami Vivekananda has been established with the state government notification on dated July 1st, 1994 for running arts faculty only. The majestic and well designed building of the college was built by ACC and was handed over in 1999. Science and commerce faculties were started in 1998. The college is affiliated to H.P. University and was given due recognition under UGC section of 12(B) in 2008 and in 2 (F) in 2009. Two new vocational courses BCA and PGDCA were started in 2009 under self financing scheme. In the year 2012 M.A. English was started. In the same year another vocational course BBA was started under self financing scheme. In the year 2019, NAAC team visited the college and the institution was accredited as “B grade” institution. Three more PG courses M.Sc. Chemistry, Botany and zoology were introduced in 2020. At present the college is spread over 73.11 bighas of land the entire campus of college is under CCTV surveillance and is connected to Wi-Fi and broadband internet system. During covid-19 pandemic all necessary SOP followed by institute.

At present about three thousand students coming from far-flung rural areas are studying in various UG and PG courses being run by this college. The college has well-furnished laboratories in the Science faculty and also in the Departments of Geography, Music and Computer Applications. It has a girl’s hostel having capacity to accommodate 91 girls’ students. It has its own well-furnished gymnasium, examination hall, conference hall and Boxing ring.

The college has a well-stocked library. The library has been shifted to a new building. The construction work of the new commerce block has processed.

The college is dedicated to the cause of learning by imparting education to inculcate a sense of responsibility devotional service among the students. The college provides a blend of academic, cultural, sports and intellectual resources. It also brings to the students a dynamic environment for the overall development of their personalities, aspirations and talents. In nut shell today, the college is known as one among the finest institutions in the state for Sciences, Humanities and Commerce...

Over the years, the college has shown consistently very good results as compared to H.P.U. passpercentage and every year students of this college get positions in the merit list is notified by H.P.

Vision of the college: To enable students to become economically independent, mentally strong and spiritually elevated human beings and socially responsible and committed citizens.

Mission of the college: Mission of the college: Swami Vivekananda has said that education is 'the manifestation of the perfection already in man' so our endeavour is to 'manifest that perfection' by imparting quality and character building education to enable

students to face the challenges of life and meet the needs of society. Our effort is always there to provide an environment conducive to innovation, creativity and team spirit and also to felicitate effective and fruit full interaction among faculty and students.

METHODOLOGY

The main aim of this study was to assess the satisfaction level of college students regarding campus facilities and teaching-learning process being adopted by the SVGC Ghumarwin so that necessary steps may be taken to provide better quality of education to existing and potential students. This study focused on Existing students. Hence population for this study constitute existing students of this college enrolled during academic session 2022-23. This study is mainly based on primary data and it has been collected using convenient cum snow ball sampling by developing structured questionnaire through Google form

SAMPLING DESIGN

Convenient cum snow ball sampling has been used to collect desired information as per following sampling detail:

Table 1.1 Sample size

Population	Number
Students	571

The table shows that the total sample for present survey is composed of 571 students during 2022-23.

Population: Existing students (UG, PG) of SVGC Ghumarwin.

Sampling unit/sampling element: Male, Female and transgender

Sampling frame: Students college attendance register

Sample size: Students

SECTION-A

Analysis of the feedback on Student's and campus facilities' of SVGC Ghumarwin

EXHIBIT 1: Demographical profile of respondents (Students)

Level of study	Frequency	Percentage
UG	487	85.3
PG	84	14.7
Total	571	100
Gender		
Male	233	40.8
Female	338	59.2
Total	571	100
Stream		
Arts	238	41.7
Commerce	124	21.7
Science	184	32.2
Vocational	25	4.4
Total	571	100

Source: Data compiled through questionnaire using Google form

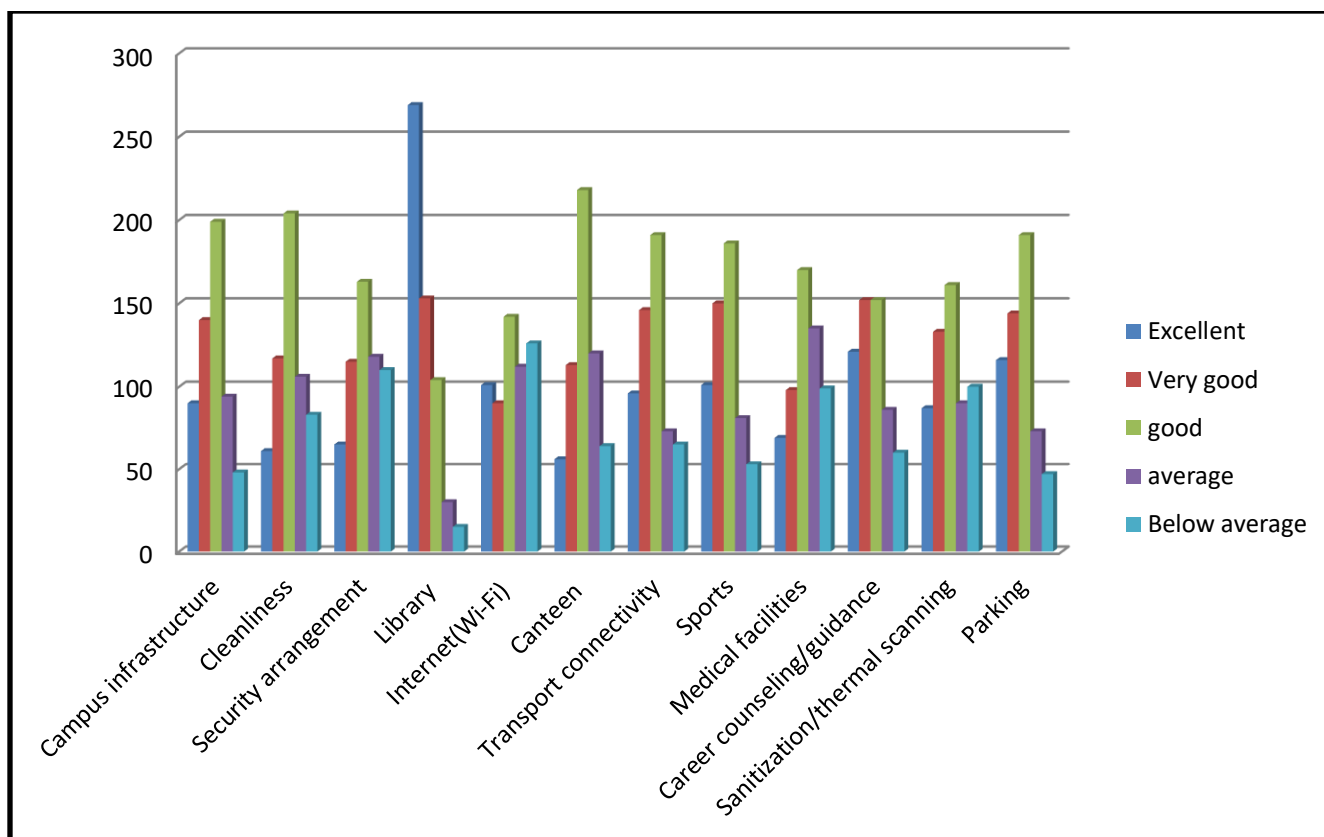
Above table and figure reveals that the student respondents for the present survey have been selected randomly from all streams being run the institution during 2022-23. As evident from the exhibit maximum responses received from Arts stream followed by Science, Commerce and Professional respectively.

EXHIBIT 2: Satisfaction level of college students' towards different campus facilities

Campus facilities	Excellent	Very good	good	average	Below average	Total
Campus	90 (15.8)	140 (24.5)	199 (34.9)	94 (16.5)	48 (8.4)	571 (100)

infrastructure						
Cleanliness	61 (10.7)	117 (20.5)	204 (35.7)	106 (18.6)	83 (14.5)	571 (100)
Security arrangement	65 (11.4)	115 (20.1)	163 (28.5)	118 (20.7)	110 (19.3)	571 (100)
Library	269 (47.1)	153 (26.8)	104 (18.2)	30 (5.2)	15 (2.5)	571 (100)
Internet(Wi-Fi)	101 (17.7)	90 (15.8)	142 (24.9)	112 (19.6)	126 (22.1)	571 (100)
Canteen	56 (9.8)	113 (19.8)	218 (38.2)	120 (21)	64 (11.2)	571 (100)
Transport connectivity	96 (16.8)	146 (25.6)	191 (33.5)	73 (12.8)	65 (11.4)	571 (100)
Sports	101 (17.7)	150 (26.3)	186 (32.6)	81 (14.2)	53 (9.3)	571 (100)
Medical facilities	69 (12.1)	98 (17,2)	170 (29.8)	135 (23.6)	99 (17.3)	571 (100)
Career counseling/ guidance	121 (21.2)	152 (26.6)	152 (26.6)	86 (15.1)	60 (10.5)	571(100)
Sanitization/ thermal scanning	87 (15,2)	133 (23.3)	161 (28.2)	90 (15.8)	100 (17.5)	571 (100)
Parking	116 (20.3)	144 (25.2)	191 (33.5)	73 (12.8)	47 (8.2)	571 (100)

Source: Data compiled through questionnaire using Google form

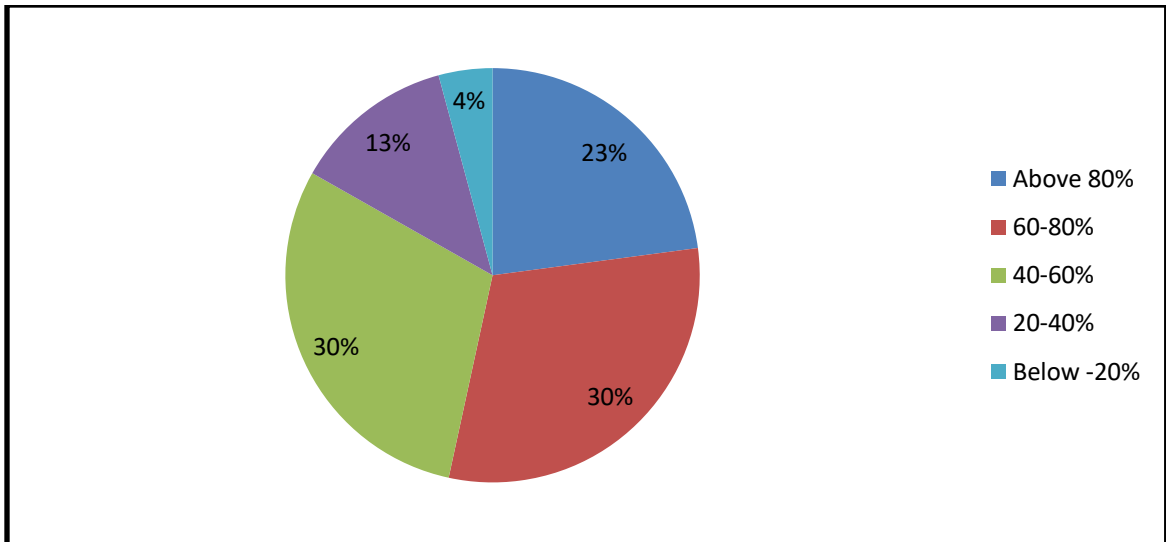


It is evident from the above that 87.7% students studying in college are satisfied with the Campus Infrastructure Facility available in the college.

EXHIBIT 3: Opinion of the students about coverage of syllabus online/offline mode

Response	Frequency	Percentage
Above 80%	131	22.9
60-80%	174	30.5
40-60%	170	29.8
20-40%	72	12.6
Below -20%	24	4.2
Total	571	100

Source: Data compiled through questionnaire using Google form

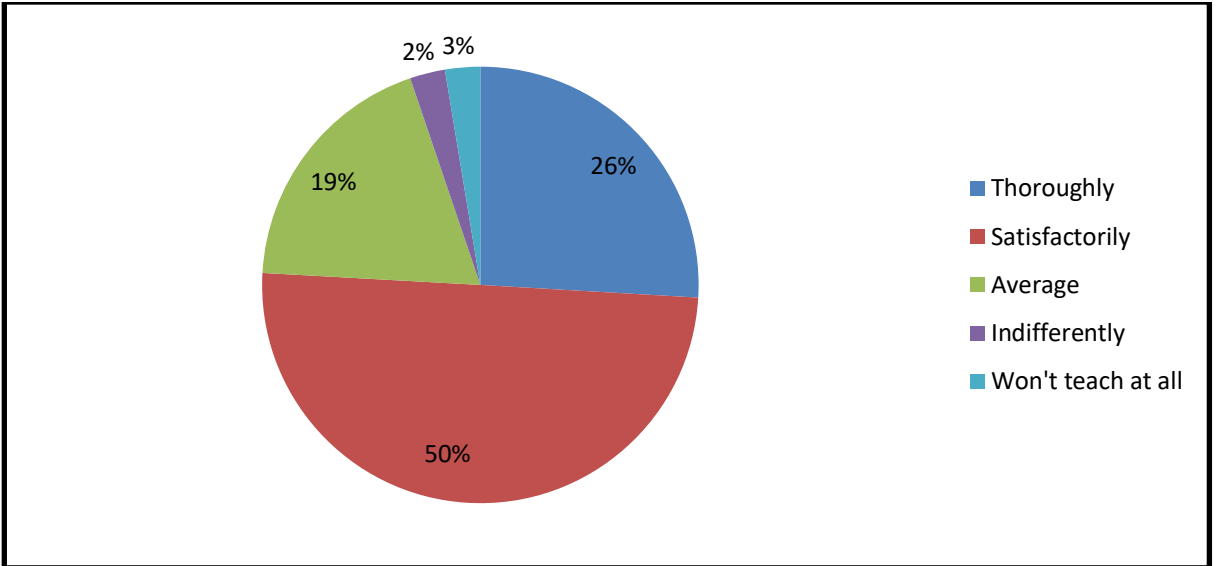


As mentioned above exhibit about 53.4 percent students of the college SVGC Ghumarwin express more than 60% syllabus covered in the offline classes and our almost all the teachers cover their most of part of the syllabus prescribed for the class within specified time.

EXHIBIT 4: Opinion of the students about preparedness of teachers for class

Response	Frequency	Percentage
Thoroughly	148	25.9
Satisfactorily	285	49.9
Average	108	18.9
Indifferently	15	2.6
Wont teach at all	15	2.6
Total	571	100

Source: Data compiled through questionnaire using Google form

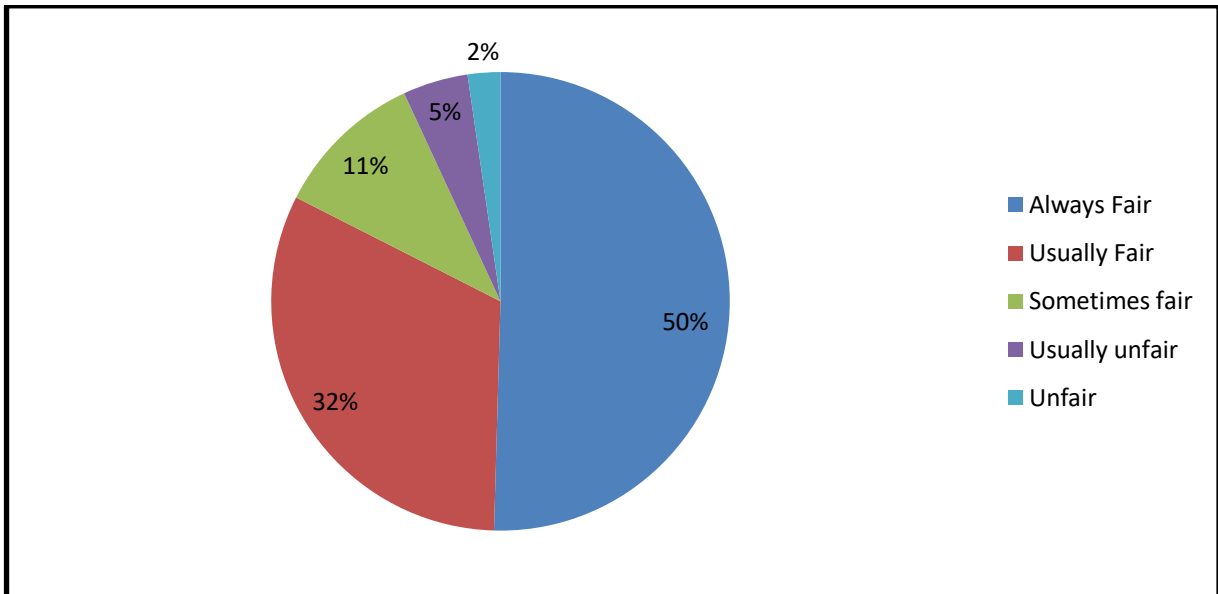


It is evident from the table that the majority of respondents of SVGC Ghumarwin are satisfied from their teacher's preparedness when they come to attend the class and this is clearly reflected that more than 75.83 % students are satisfied with the teacher's preparedness

EXHIBIT 5 Opinion of the students about fairness of internal evaluation process by the college teachers

Response	Frequency	Percentage
Always Fair	351	50.4
Usually Fair	223	32
Sometimes fair	74	10.6
Usually unfair	32	4.6
Unfair	16	2.3
Total	696	100

Source: Data compiled through questionnaire using Google form

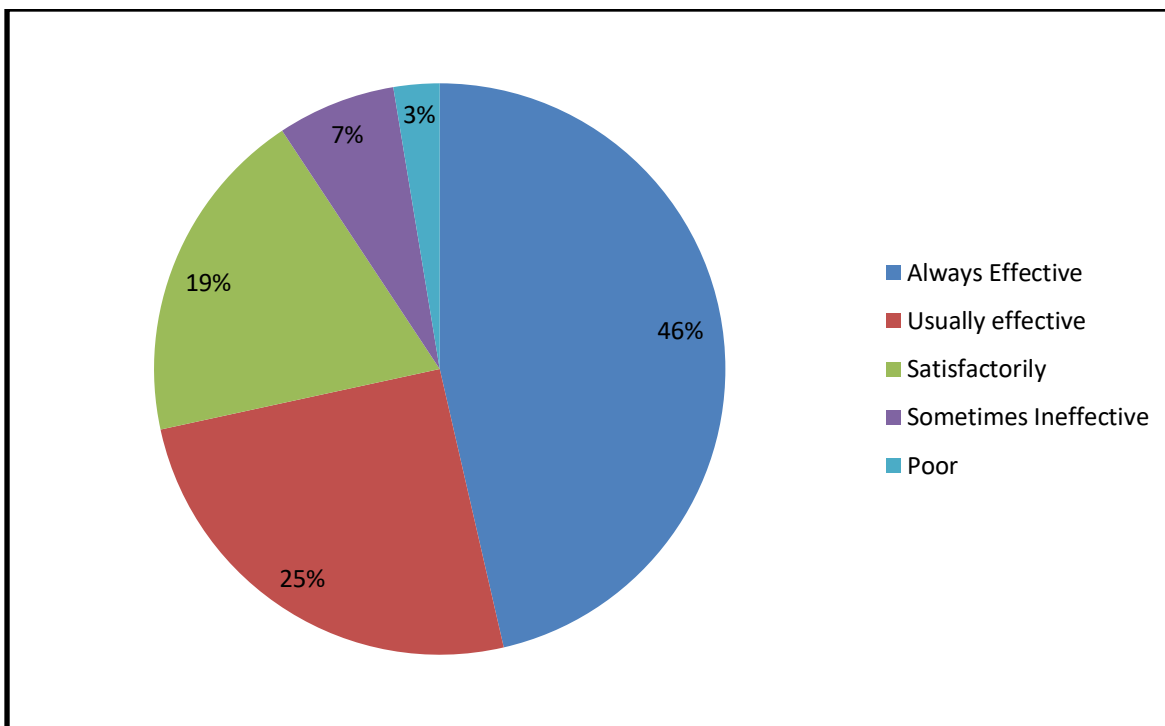


The teachers of SVGC Ghumarwin are fair during the internal evaluation of students which is clear from the above table that the majority of our students i.e. 82% gives their remarks for the teachers as a fair and effective evaluators.

EXHIBIT 6 Opinion of the students about teachers ability to communicate

Response	Frequency	Percentage
Always Effective	265	46.4
Usually effective	144	25.2
Satisfactorily	109	19.1
Sometimes Ineffective	38	6.7
Poor	15	2.6
Total	571	100

Source: Data compiled through questionnaire using Google form

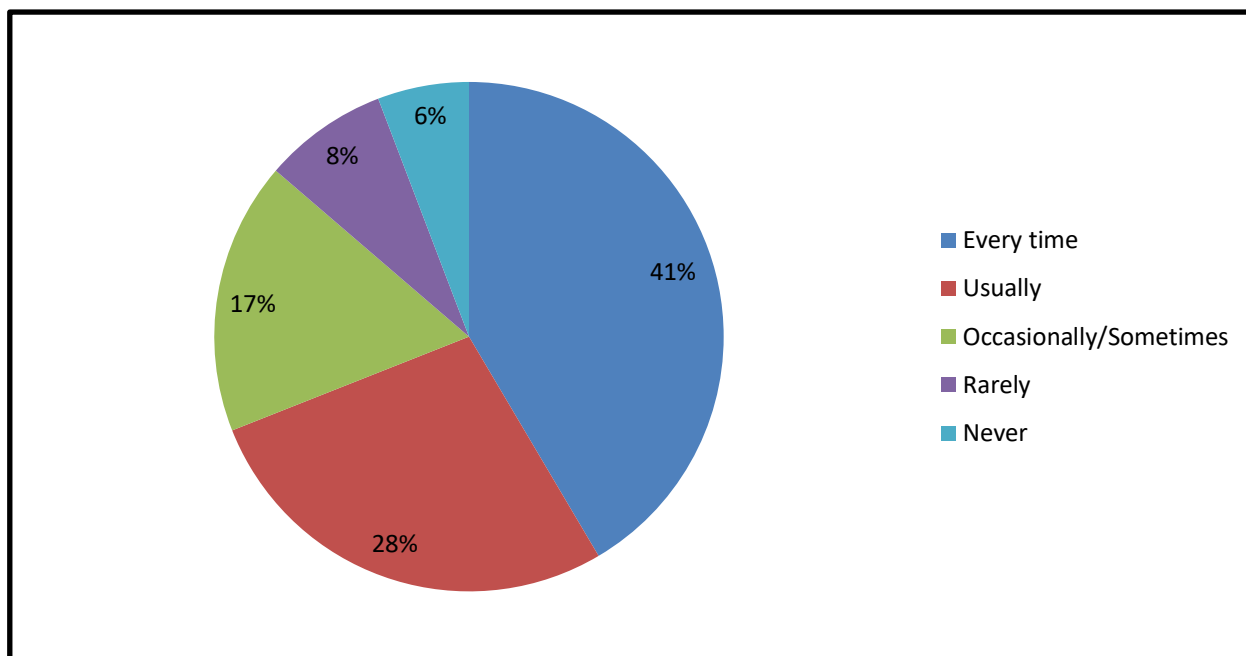


It is evident from the table that the students of SVGC Ghumarwin are fully satisfied from their teachers ability to communicate through offline mode of teaching which results in healthy student-teacher relations

EXHIBIT 7 Opinion of the respondents about discussion of assignments performance with the students

Response	Frequency	Percentage
Every time	237	41.5
Usually	157	27.5
Occasionally/Sometimes	99	17,3
Rarely	45	7.9
Never	33	5.8
Total		

Source: Data compiled through questionnaire using Google form

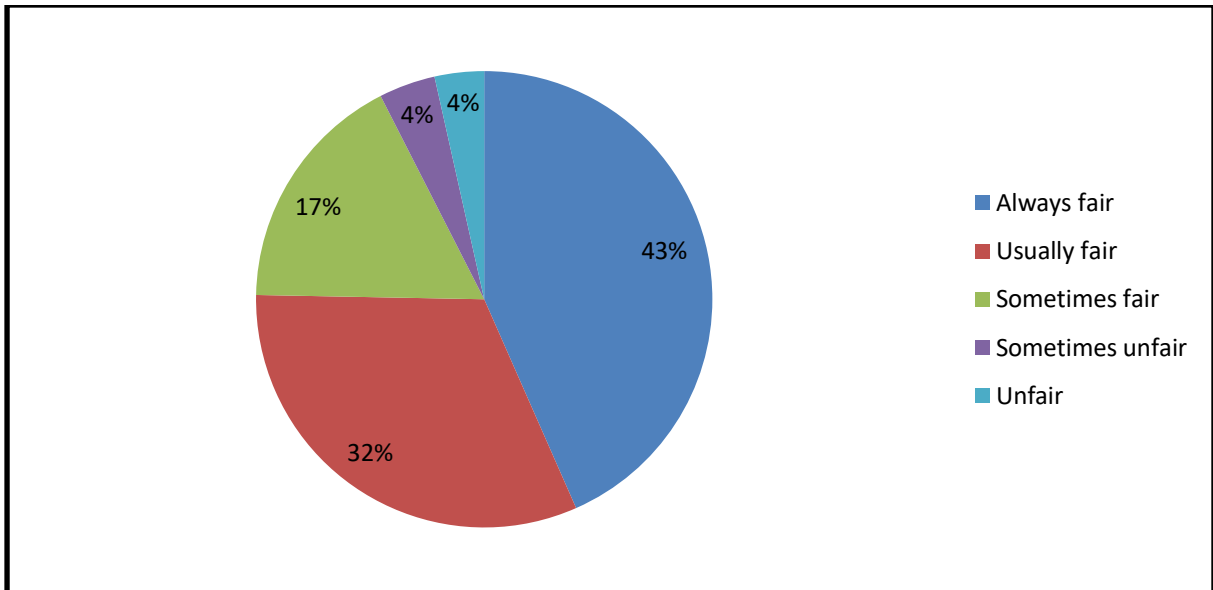


It is apparent from the table and figure mentioned above that the majority of respondents of SVGC Ghumarwin have given optimistic belief for the discussion of assignments & their performance in class and gives some remedial measures in the study hours.

EXHIBIT 8 Opinion of the respondents about Fairness in internal evaluation

Response	Frequency	Percentage
Always fair	248	43.4
Usually fair	182	31.9
Sometimes fair	98	17.2
Sometimes unfair	23	4
Unfair	20	3,5
Total	571	100

Source: Data compiled through questionnaire using Google form

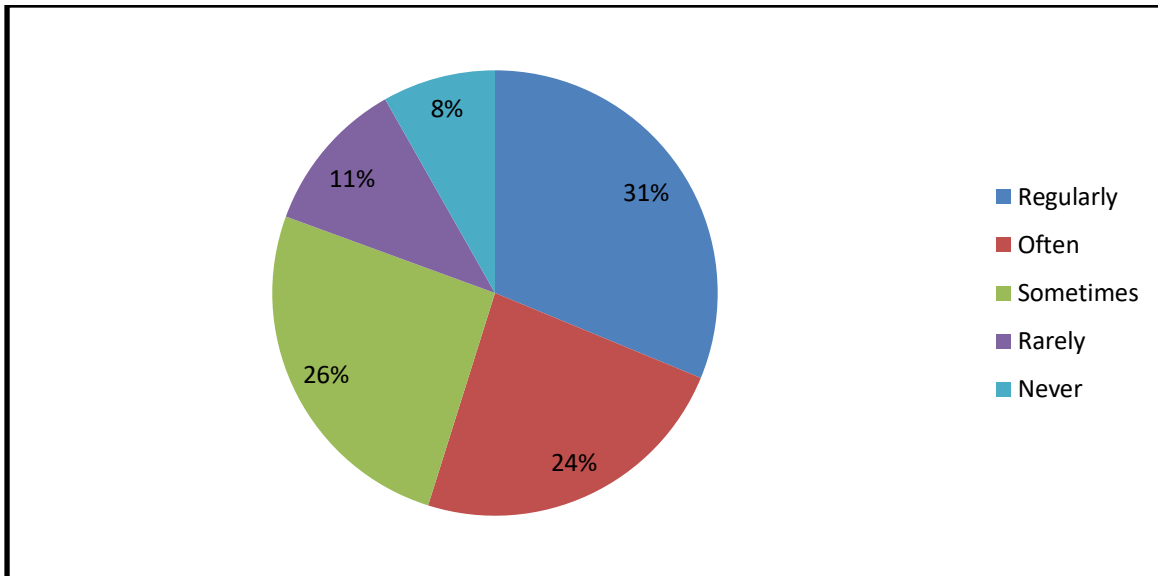


The teachers of SVGC Ghumarwin are fair during the internal evaluation of students which is clear from the above table that the majority of our student i.e.75.3% gives their remarks for the teachers as a fair and effective evaluators.

EXHIBIT 9 Opinion of the students about promotion of internship, student exchange and field visits by the college

Response	Frequency	Percentage
Regularly	178	31.2
Often	135	23.6
Sometimes	147	25.7
Rarely	64	11.2
Never	47	8.2
Total	571	100

Source: Data compiled through questionnaire using Google form

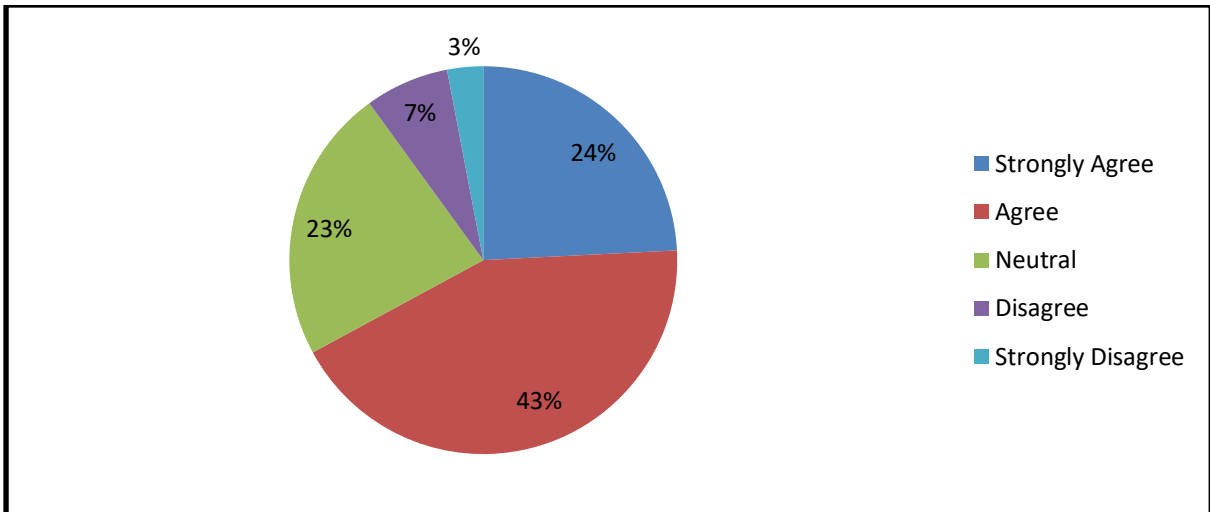


It is apparent from the table and figure that the majority of respondents of SVGC Ghumarwin opinionated that the promotion of internship, student exchange and field visit programme in the college are organized on regular basis.

EXHIBIT 10 Opinion of the students about providing multiple opportunities to learn and grow by the college

Response	Frequency	Percentage
Strongly Agree	138	24.2
Agree	245	42.9
Neutral	131	22.9
Disagree	40	7
Strongly Disagree	17	3
Total	571	100

Source: Data compiled through questionnaire using Google form

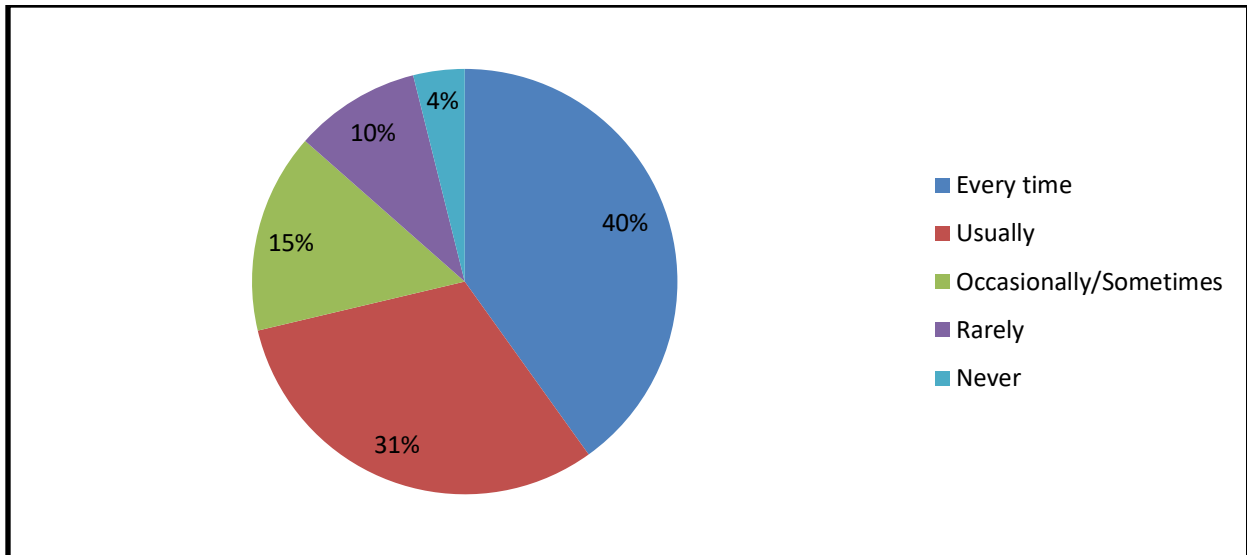


It is evident from the table that the majority of our students of SVGC Ghumarwin have agreed with the statement that the multiple opportunities are available in college to learn and grow and it is clearly reflected from our results in academics.

EXHIBIT 11 Opinion of the students about discussion with students about their expected competencies, course outcomes and programme outcomes by the teachers

Response	Frequency	Percentage
Every time	229	40.1
Usually	178	31.2
Occasionally/Sometimes	87	15.2
Rarely	55	9.6
Never	22	3.9
Total	571	100

Source: Data compiled through questionnaire using Google form

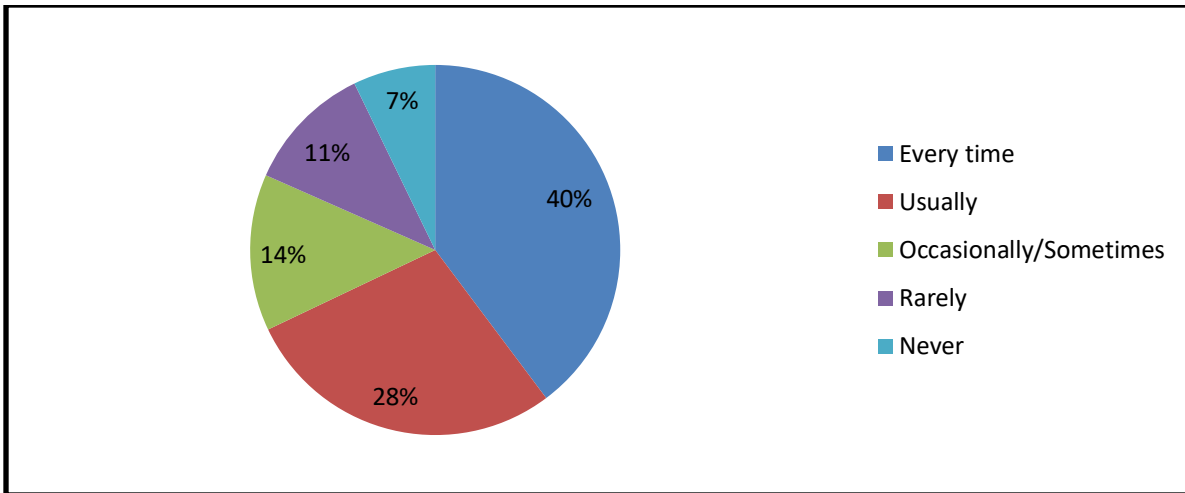


It is evident from the above figure and table that the majority of students of SVGC Ghumarwin are in agreement with teacher's involvement in discussions with students about their expected competencies, course as well as programme outcomes.

EXHIBIT 12 Opinion of the students about ability of teachers to identify and overcome the weaknesses of students

Response	Frequency	Percentage
Every time	227	39.8
Usually	161	28.2
Occasionally/Sometimes	78	13.7
Rarely	64	11.2
Never	41	7.2
Total	571	100

Source: Data compiled through questionnaire using Google form

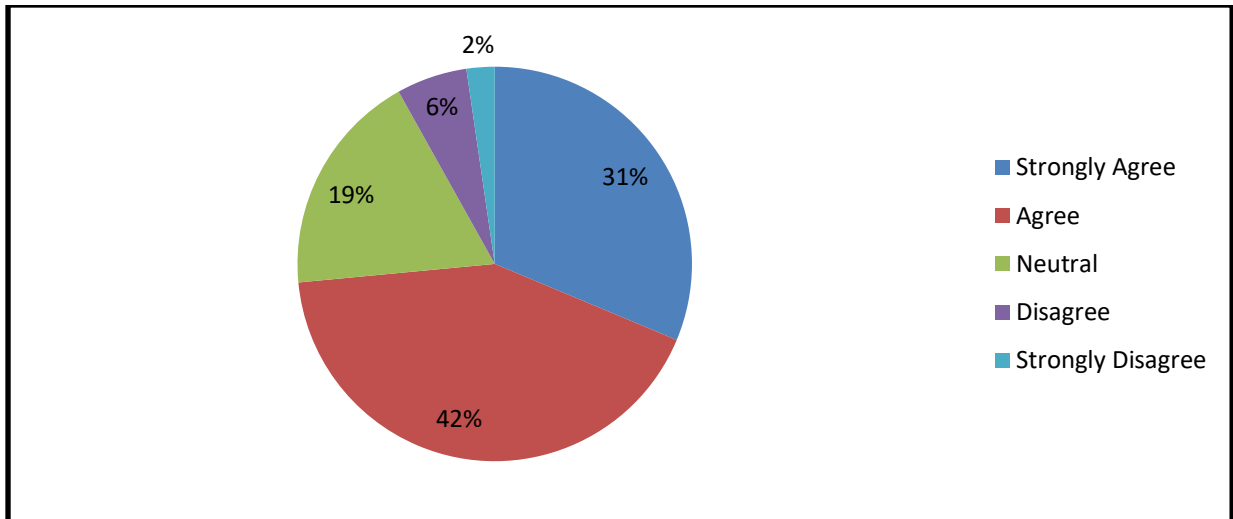


It is apparent from the table and figure that the majority of our students of SVGC Ghumarwin are fully satisfied with teacher’s involvement to identify and discuss their weakness in class as well as individually.

EXHIBIT 13 Opinion of the students about teachers efforts to encourage students to participate inextracurricular activities

Response	Frequency	Percentage
Strongly Agree	179	31.3
Agree	241	42.2
Neutral	105	18.4
Disagree	33	5.8
Strongly Disagree	13	2.3
Total	571	100

Source: Data compiled through questionnaire using Google form

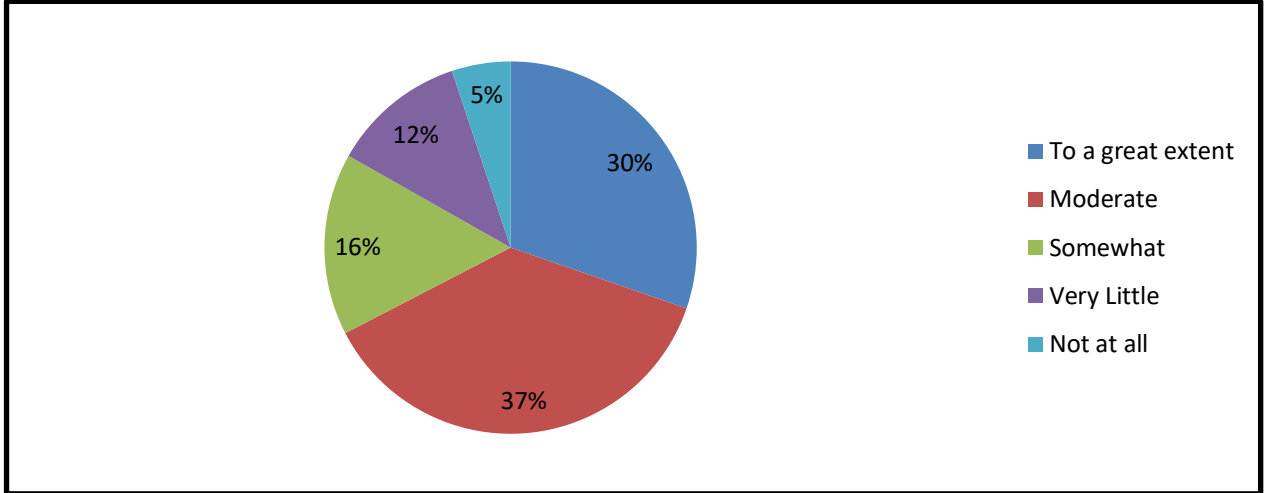


It is apparent from the above table that the majority of respondents of SVGC show satisfaction for the encouragement by the teachers for the students to participate in extra-curricular activities.

EXHIBIT 14 Opinion of the students about efforts of college to inculcate soft skills, life skills and employability skills among college students

Response	Frequency	Percentage
To a great extent	173	30.3
Moderate	212	37.1
Somewhat	90	15.8
Very Little	67	11.7
Not at all	29	5.1
Total	571	100

Source: Data compiled through questionnaire using Google form

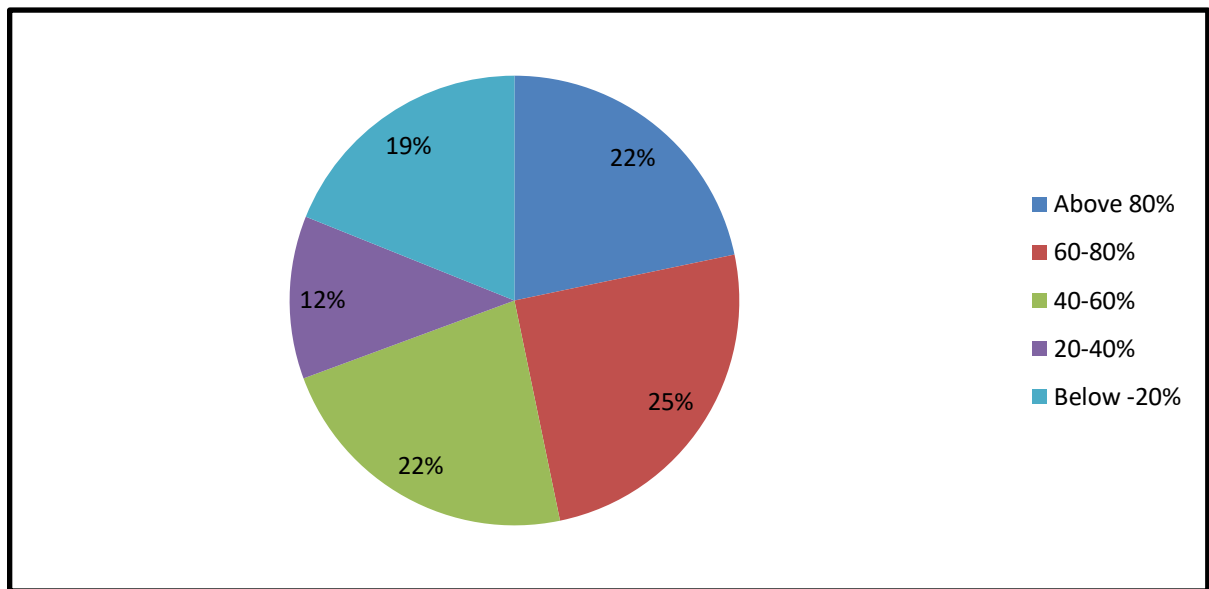


It is apparent from the above table and figure that the majority of respondents of SVGC Ghumarwin gave their satisfaction to a great extent regarding the efforts made by SVGC Ghumarwin to inculcate soft-skills, life-skills and employability skills in the college.

EXHIBIT 15 Opinion of the students about use of ICT tools during teaching (like CD,Projectors and Multimedia) by the college teachers

Response	Frequency	Percentage
Above 80%	124	21.7
60-80%	143	25
40-60%	129	22.6
20-40%	67	11.7
Below -20%	108	18.9
Total	571	100

Source: Data compiled through questionnaire using Google form

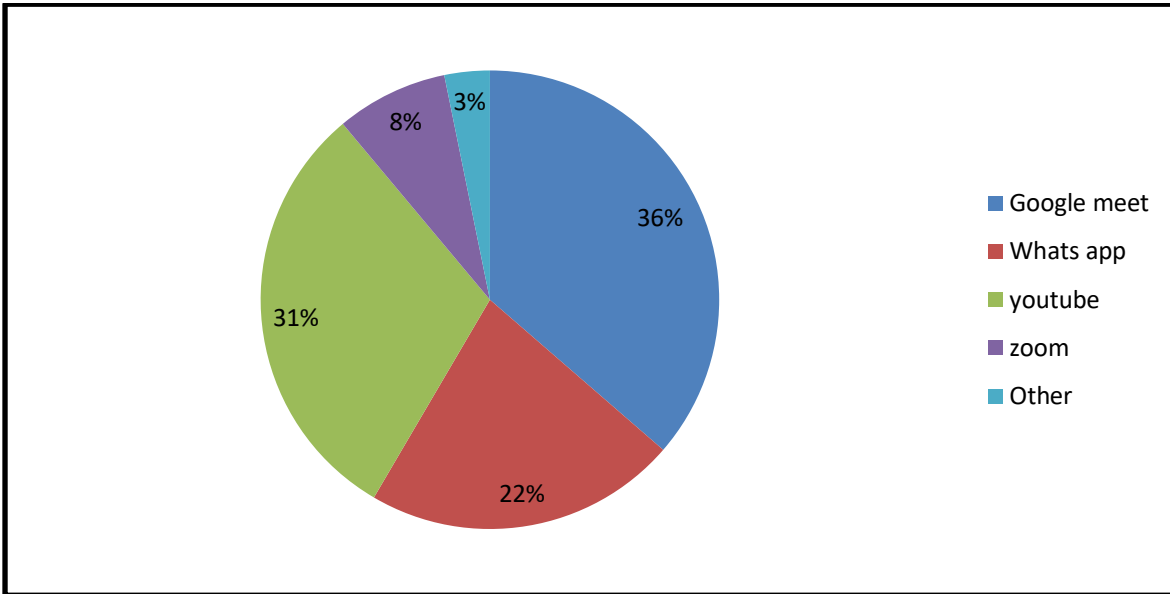


The above table and figure depicts that the majority of students 60 to 80 percent students of SVGC Ghumarwin are of the opinion that the teachers use ICT tools during teaching such as LCD, Projectors and Multimedia during their class room sessions.

EXHIBIT 16 Preferred mode of online learning process in the college

Response	Frequency	Percentage
Google meet	208	36.4
Whatsapp	126	22.1
YouTube	174	30.5
zoom	45	7.9
Other	18	3.2
Total	571	100

Source: Data compiled through questionnaire using Google form

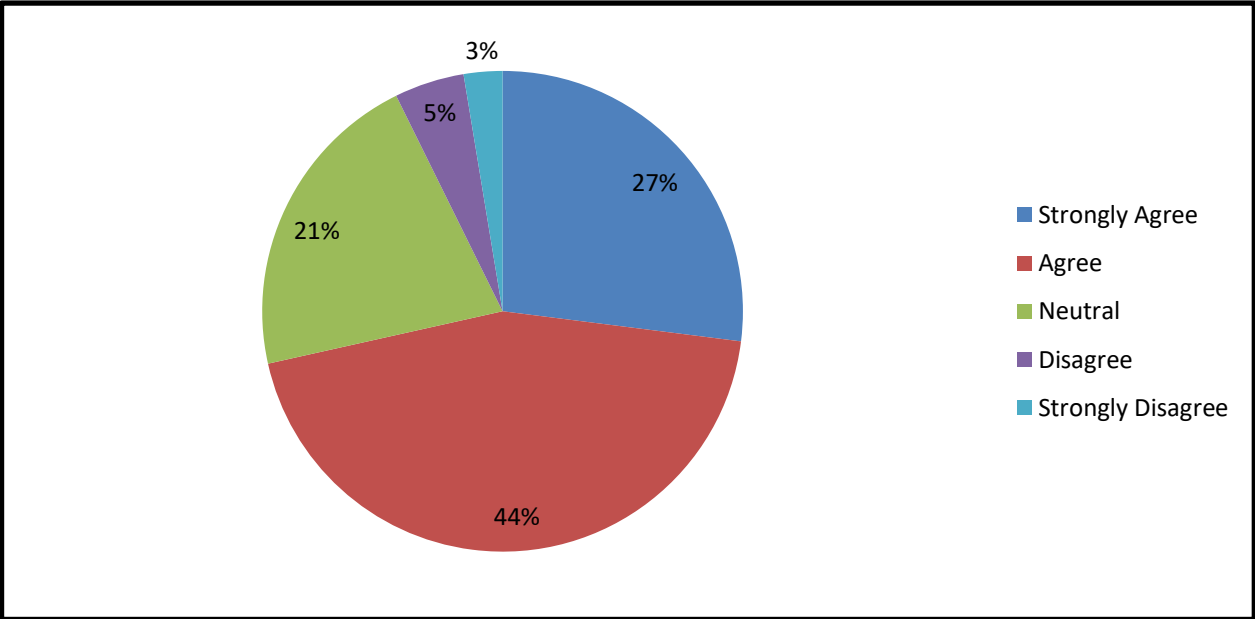


The above table and figure depicts that Google Meet, YouTube and Whatsapp are the top online modes used for learning by the students of this college. Subsequently they are able to learn effectively through online mode of teaching.

EXHIBIT 17 Overall satisfaction level of college students towards teaching learning process in the college

Response	Frequency	Percentage
Strongly Agree	154	27
Agree	254	44.5
Neutral	121	21.2
Disagree	27	4.7
Strongly Disagree	15	2.6
Total	571	100

Source: Data compiled through questionnaire using Google form



The above mentioned table depicts that majority of the students are agreed when asked about the overall satisfaction level towards teaching learning process. However, on the contrary, only 2.6 percent of the total surveyed students have strongly disagreed with the statement.