

### Annexure C-3(3.7.1)

#### Activity:

Laboratories with Adequate equipment according to syllabi

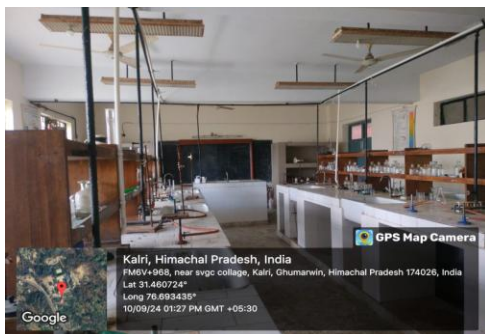
#### Response:

There are 20 Existing laboratories of different Streams/Subjects

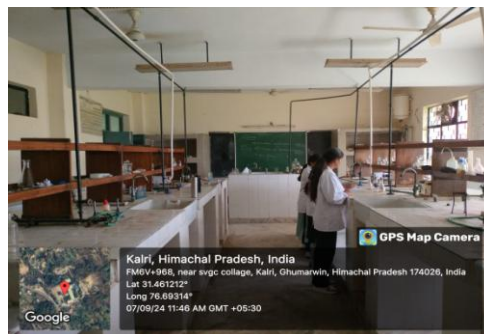
- (a) Chemistry lab =2
- (b) Physics lab=2
- (c) Botany Lab=2
- (d) Zoology Lab=2
- (e) Computer lab=1
- (f) Commerce Lab=1
- (g) Geography Lab=1
- (h) Language lab=1
- (i) BCA LAB=1
- (j) PGDCA LAB=1
- (k) B.Voc LAB (RM)=1
- (l) B.Voc Lab (H& M)=1

## CHEMISTRY LABS

### CHEMISTRY LAB- 1 (R.N 116)



### CHEMISTRY LAB -2 (R.N 118)

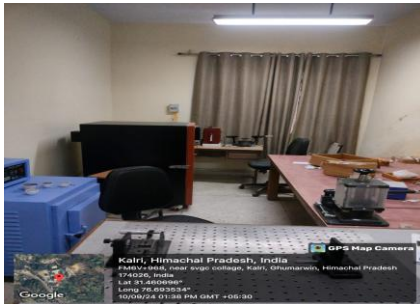
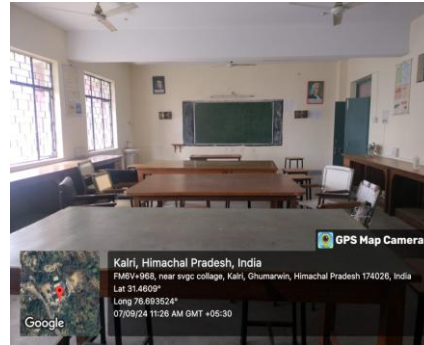


# PHYSICS LABS

**PHY LAB -1 { ROOM NO 216}**

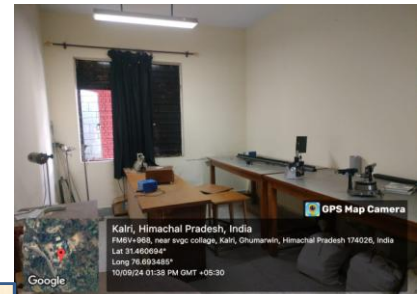


**PHY LAB -2 {ROOM NO 217}**



**LASER LAB**

**COMPUTATIONAL LAB**



**DARK ROOM**



# BOTANY LABS

**BOTANY LAB-1(R.N-119)**

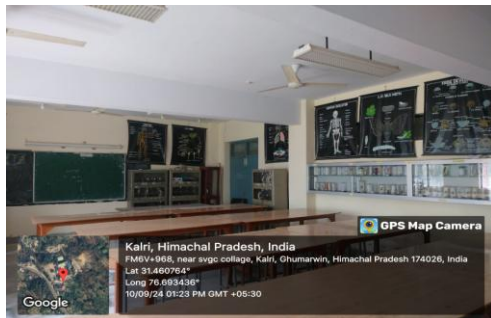


**BOTANY LAB -2(R.N-121)**



# ZOOLOGY LABS

**ZOOLOGY LAB 1(R.N115)**

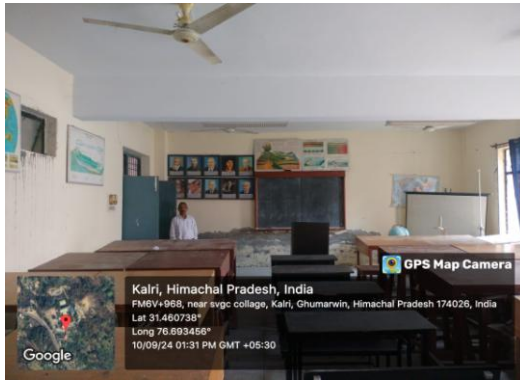


**ZOOLOGY LAB 2 (R.N 117)**



# GEOGRAPHY LABS

## GEOGRAPHY LAB (R.N120)



## GEOGRAPHY GIS LAB (R.N 204)





# HEIS LABS

**BCA LAB  
(R.NO 221)**

**PGDCA LAB  
(R.N 305)**



# LANGUAGE LAB



# IT LABS

## COMPUTER LAB



## COMMERCE COMPUTER LAB



# B.Voc Labs

## HOSPITALITY & TOURISM



## RETAIL MANAGEMENT

